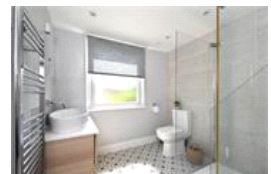
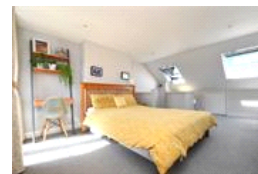
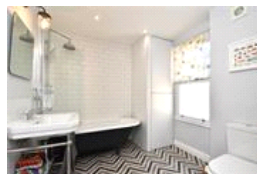
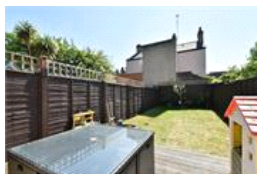
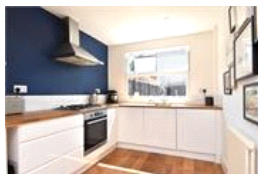
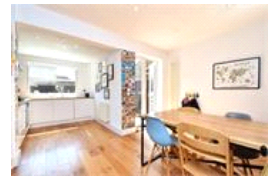
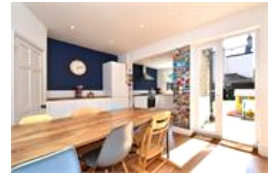


Crebor Street , SE22 (3 bedroom House)

£930,000



## property description

Stylish and elegantly presented is this superb freehold 3-bedroom Victorian half house, with a SOUTH facing private rear garden, located on this popular residential street in the heart of East Dulwich. The house has an imposing red brick façade with detailed masonry, a small walled front garden shielding it from the street with a Victorian styled pathway leading to the front entrance. The house also benefits from double glazed windows throughout. The reception room at the front is a charming lounge with a beautiful working original Victorian fireplace as the centrepiece with bespoke joinery in the alcoves, original cornicing on the ceiling and engineered wood flooring. Two large sash ...

## property features

- Superb freehold 3-bedroom Victorian half house
- SOUTH facing private rear garden
- Nicely decorated with period features
- Double glazing throughout
- Stunning open plan kitchen dining room
- Separate front lounge with period features and working fireplace
- Family bathroom and an en-suite shower room

ALPS Estates Ltd trading as Pickwick Estates  
47 Honor Oak Park Honor Oak  
London, SE23 1EA, United Kingdom  
Reg No : 7444750  
Registered in England

Telephone : 020 3397 1166  
Website : <https://www.pickwickestates.co.uk>





For Full EPC Information, click [here](#)