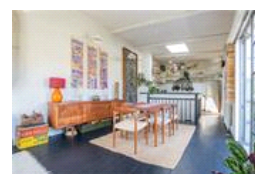
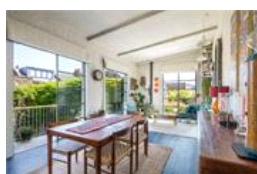
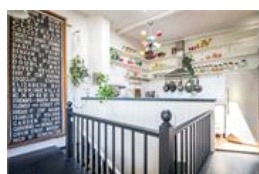
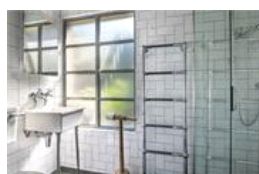
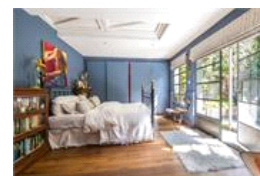
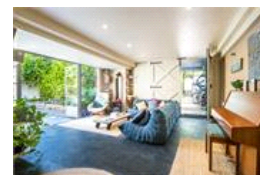
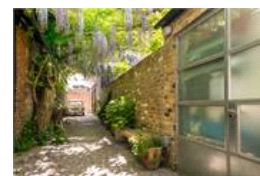


Fellbrigg Road , SE22 (3 bedroom House)

£1,695,000 (OIEO)



property description

VIEWING DAY SATURDAY 7th JUNE. Looking for something different? Houses like this don't come up very often! This utterly unique warehouse conversion in the heart of East Dulwich, a former dairy building oozing with character and charm, that has been converted into a chic family home. Offering ground and first floor living rooms, three double bedrooms, two bathrooms and a tranquil private, slate-tiled courtyard, plus two iron balconies to the first floor. This well laid out accommodation offers over 80 sqm of entertaining space! This genuinely rare to market home sits sandwiched between a row of ordinary Victorian terraces, in a very private and secluded position off Fellbrigg Road in the ...

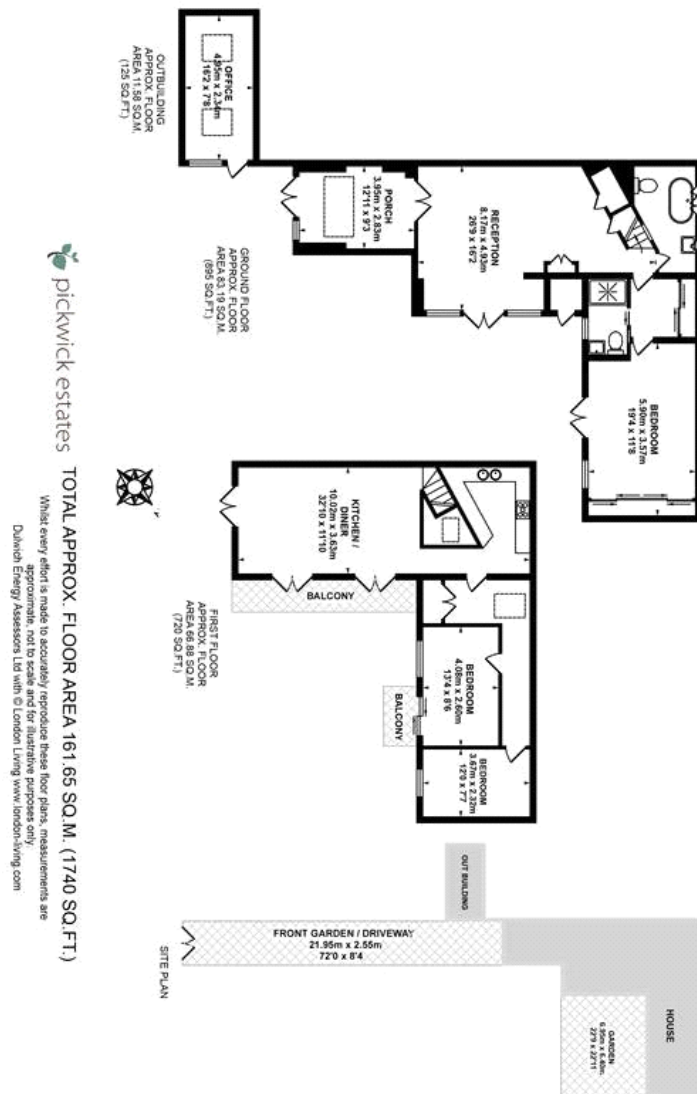
property features

- Unique 3 double bedroom, former dairy warehouse conversion
- Tranquil private, slate-tiled courtyard, plus two iron balconies to the first floor
- Private lane and secluded position off Fellbrigg Road in the heart of East Dulwich
- Two reception areas upstairs and down offering over 80 sqm of entertaining space

ALPS Estates Ltd trading as Pickwick Estates
8 Woodwarde Road Dulwich
London, SE22 8UJ, United Kingdom
Reg No : 4270797
Registered in England

Telephone : 020 3397 1144
Website : <https://www.pickwickestates.co.uk>





For Full EPC information, click [here](#)