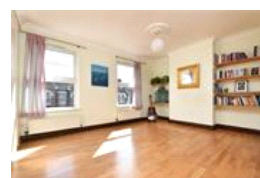
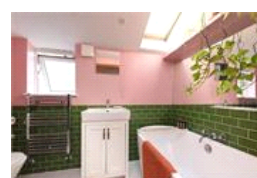
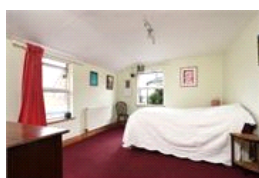
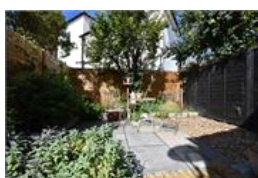
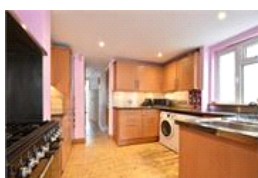
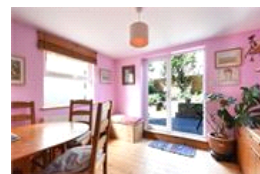
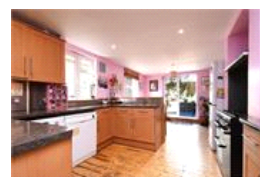
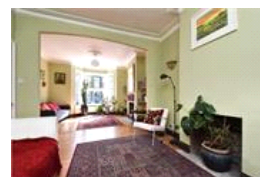
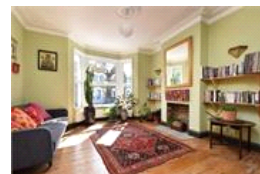


Bellenden Road, SE15 (3 bedroom House)

£1,100,000



property description

Located on the leafy and sought-after Bellenden Road, this charming Victorian terrace spans 1,216 sq ft and offers three generously sized double bedrooms, a family bathroom, double reception room, kitchen/breakfast room, and a landscaped west-facing rear garden. The home retains many original features, blending period charm with modern finishes. From the street, the house has plenty of kerb appeal, with its exposed brick façade, decorative masonry, and sash windows. A neat front garden and a few steps lead up to an ornate arched porch. Inside, the hallway provides useful under-stairs storage and a guest WC. At the front of the property, the double reception room has been opened up to...

property features

- Charming Victorian terrace on sought-after Bellenden Road
- Three spacious double bedrooms
- Stylish family bathroom with freestanding bath &
- Bright double reception with fireplaces, bay window & original flooring
- Kitchen/breakfast room with island, range cooker & French doors to garden

ALPS Estates Ltd trading as Pickwick Estates
47 Honor Oak Park Honor Oak
London, SE23 1EA, United Kingdom
Reg No : 7444750
Registered in England

Telephone : 020 3397 1166
Website : <https://www.pickwickestates.co.uk>





For Full EPC Information, click [here](#)