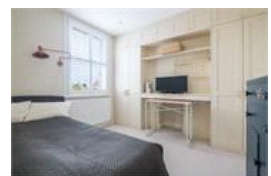
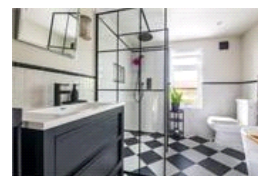
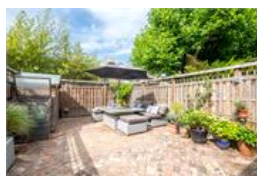
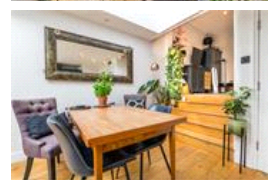
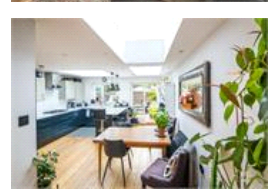
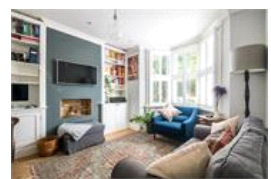


Goodrich Road , SE22 (4 bedroom House)

£1,225,000 (OIEO)



property description

Nestled in the heart of East Dulwich, this exquisite 4-bedroom, 2-bathroom Victorian family home has been meticulously extended and renovated, while retaining its period charm. Offering 1,311 sq ft of beautifully arranged living space, this home blends classic character with modern comfort. The property boasts wonderful kerb appeal, with traditional Victorian features such as double-glazed sash windows, detailed masonry around the windows and doorways, and an inviting arched porch. The home is set back from the street, framed by a neatly manicured slate-tiled front garden, providing a sense of privacy and charm. Upon entering, you'll be greeted by an entrance hall with high ceilings an...

property features

- Beautifully extended 4-bedroom, 2-bathroom Victorian family home
- 1,311 sq ft of well-designed living space, blending period charm and modern upgrades
- Front reception room with a bay window, bespoke shelving, and a feature fireplace
- Spacious kitchen-dining room with shaker-style kitchen, white stone worktops, and underfloor

ALPS Estates Ltd trading as Pickwick Estates
8 Woodwarde Road Dulwich
London, SE22 8UJ, United Kingdom
Reg No : 4270797
Registered in England

Telephone : 020 3397 1144
Website : <https://www.pickwickestates.co.uk>



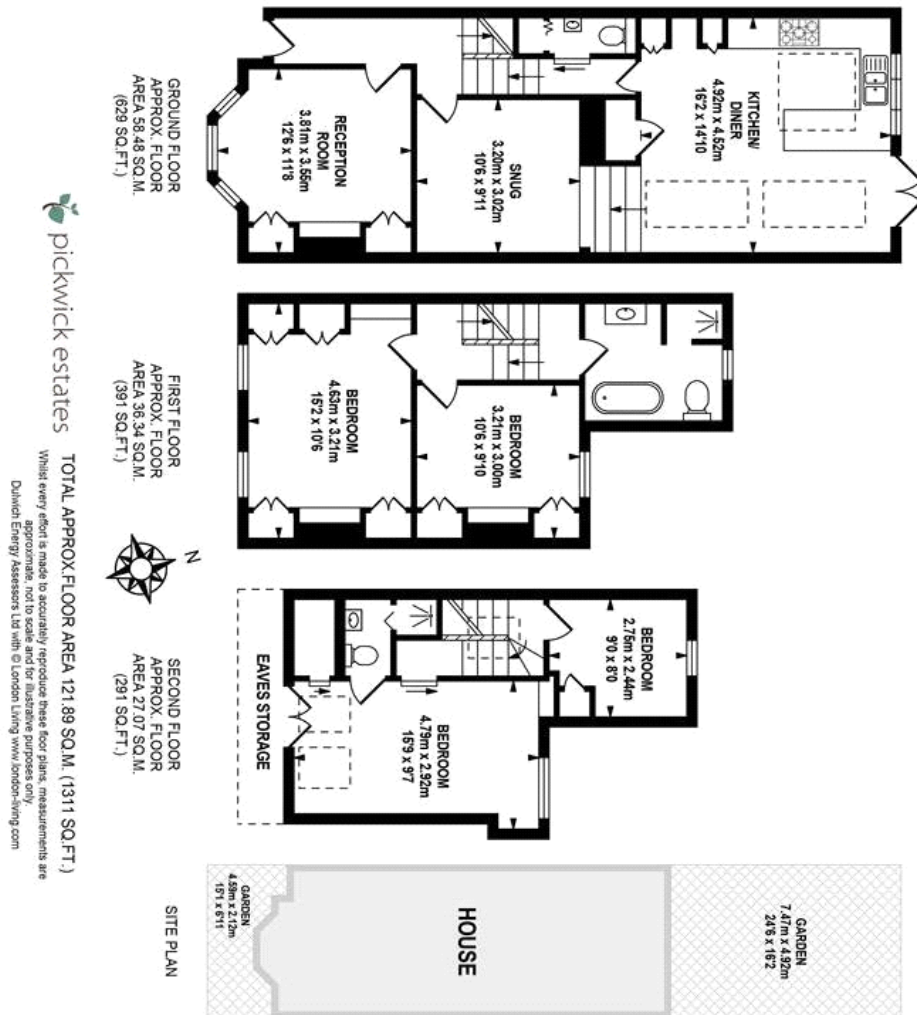
- Low-maintenance rear garden with a herri...



020 3397 1144

Goodrich Road , SE22 (4 bedroom House)

£1,225,000 (OIEO)



Score	Energy rating	Current	Potential
82+	A		
81-81	B		
69-80	C	73 c	80 c
55-68	D		
39-54	E		
21-38	F		
1-20	G		

For Full EPC information, click [here](#)