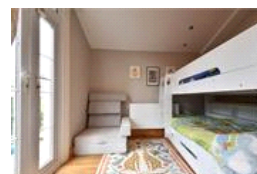
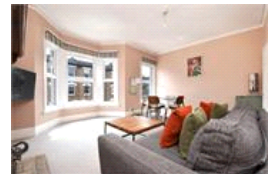
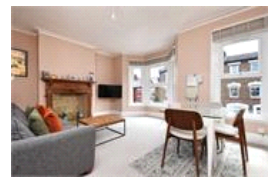


Whatman Road, SE23 (2 bedroom Flat)

£475,000



property description

VIEWING DAY SATURDAY 19TH JULY. A beautifully presented two double-bedroom first-floor Victorian conversion flat, offered chain-free with a share of freehold and direct access to its own private rear garden. Occupying the entire first floor of an attractive red-brick Victorian terrace, this spacious flat (706 sqft / 65.6 sqm) enjoys charming period features, generous proportions, and a peaceful location on a quiet residential street in the heart of Honor Oak Park. Set back from the street behind a walled front garden, the property benefits from double glazing throughout and a thoughtfully designed layout. Entrance is via the ground floor, where stairs lead up to a wide landing that con...

property features

- Two generously sized double bedrooms with high ceilings and garden views
- Chain-free sale with share of freehold and private garden access
- Modern, high-spec shower room with elegant finishes and dual aspect windows
- Renovated kitchen with ample storage, wood worktops, and space for appliances

ALPS Estates Ltd trading as Pickwick Estates
47 Honor Oak Park Honor Oak
London, SE23 1EA, United Kingdom
Reg No : 7444750
Registered in England

Telephone : 020 3397 1166
Website : <https://www.pickwickestates.co.uk>



- Peaceful first-floor position occupying ...



020 3397 1166

Whatman Road, SE23 (2 bedroom Flat)

£475,000



For Full EPC information, click [here](#).