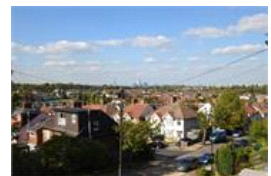
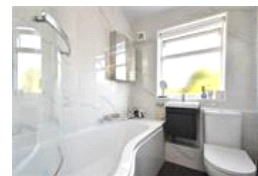
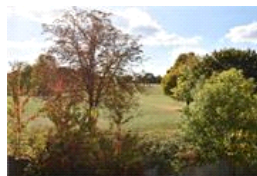
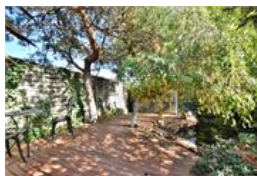
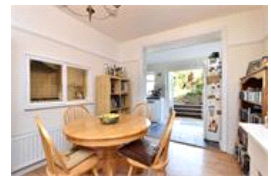
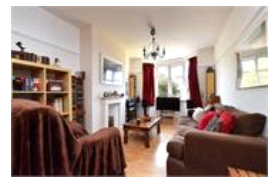


Bexhill Road, SE4 (3 bedroom House)

£825,000 (OIEO)



property description

A charming three double bedroom 1930s family home with stunning unique views of London and the surrounding landscape. The house also benefits from an extensive 83ft (25.3m) rear garden with a pond, double glazing throughout and an abundance of natural light. Perched on the edge of Blythe Hill Fields, this charming home offers a rare combination of elevated position, picturesque vistas, and thoughtful living space. Steps lead up to the front porch and entrance, where panoramic westerly views and an expansive share of sky create an immediate sense of openness. Inside, a welcoming hallway with storage beneath the stairs leads through to the reception room and kitchen. The spacious double...

property features

- Three double bedroom 1930s family home
- Spectacular views of London and surrounding landscape
- Large 83ft rear garden
- Double reception room
- Fully fitted kitchen
- Family bathroom
- Potential to remodel and renovate

ALPS Estates Ltd trading as Pickwick Estates
47 Honor Oak Park Honor Oak
London, SE23 1EA, United Kingdom
Reg No : 7444750
Registered in England

Telephone : 020 3397 1166
Website : <https://www.pickwickestates.co.uk>





For Full EPC information, click [here](#)