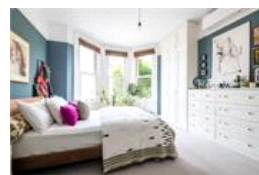
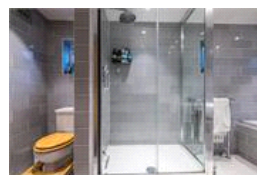
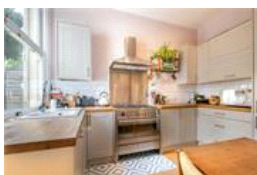
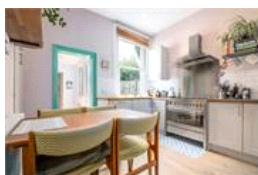
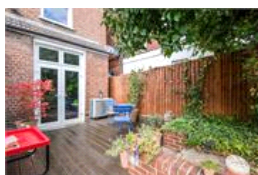
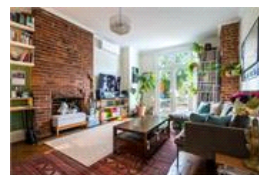


Therapia Road, SE22 (2 bedroom Flat)

£700,000



## property description

Occupying the entire ground floor of an elegant red brick detached Victorian house on this popular residential treelined street, is this beautifully presented two-bedroom apartment offering almost 900 sq ft of stylish and well-proportioned living space. The flat benefits from being sold with a share of freehold, has off street parking, side return access and a private decked patio that leads to an expansive shared rear garden. The property is brimming with period charm, featuring high ceilings, double glazed sash windows and original detailing, yet has been thoughtfully decorated throughout with modern upgrades such as double glazing and air conditioning to provide an efficient, comfo...

## property features

- Entire ground floor of a handsome red-brick Victorian detached house
- Almost 900 sq ft of stylish, well-proportioned living space
- Off-street parking, side-return access & private decked patio
- Expansive, well-maintained shared rear garden
- Two spacious double bedrooms with excellent

ALPS Estates Ltd trading as Pickwick Estates  
47 Honor Oak Park Honor Oak  
London, SE23 1EA, United Kingdom  
Reg No : 7444750  
Registered in England

Telephone : 020 3397 1166  
Website : <https://www.pickwickestates.co.uk>



