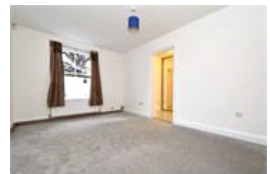
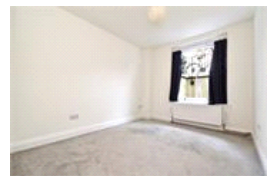
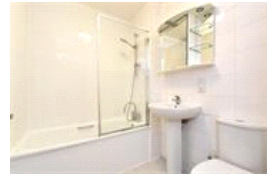


Thurlow Park Road, SE21 (2 bedroom Flat)

£425,000



property description

Offered to the market chain free is this generously proportioned two double bedroom, two-bathroom split-level flat, occupying the ground floors of a magnificent period property just moments from West Dulwich station. The flat offers 883 sq ft (82 sqm) of well-planned living space, featuring high ceilings, sash windows, off-street parking, and a long lease. On entry, a spacious hallway with ample storage leads to a bright reception room with high ceilings, wood-effect flooring, and a large sash window. Adjacent is a fully fitted kitchen with an excellent range of wall and base units, generous worktop space, and white metro-tiled splashbacks. This room also benefits from high ceilings and a large sash window providing natural light. On the lower level, the main bathroom sits off the hallway and includes a bath with shower over, toilet, and wash hand basin. To the front of the property are two generously sized double bedrooms, both with carpeted floors, high ceilings, and sash windows overlooking a lightwell. The principal bedroom is particularly impressive, with a wal...

property features

- Split level conversion flat
- Two good size double bedrooms
- Two modern fitted bathrooms
- Large spacious reception
- Within close proximity to West Dulwich Train Station

ALPS Estates Ltd trading as Pickwick Estates
47 Honor Oak Park Honor Oak
London, SE23 1EA, United Kingdom
Reg No : 7444750
Registered in England

Telephone : 020 3397 1166
Website : <https://www.pickwickestates.co.uk>



Thurflow Court

Approximate Gross Internal Area = 833 sq ft / 82 sq m

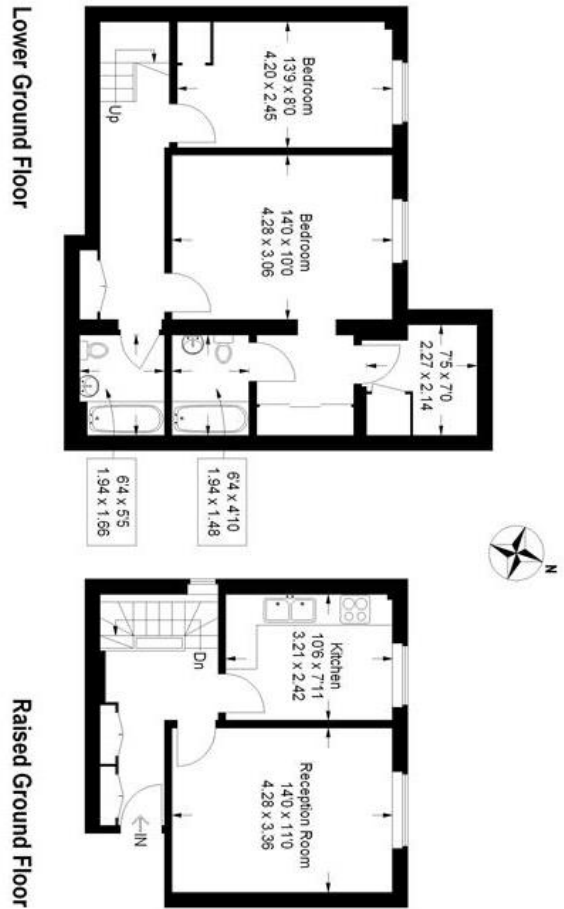


Illustration for identification purposes only, measurements are approximate

Score	Energy rating	Current	Potential
92+	A		
81-91	B		
69-80	C		78 C
55-68	D	65 D	
39-54	E		
21-38	F		
1-20	G		

For Full EPC information, click [here](#)