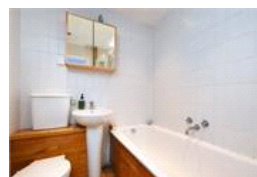
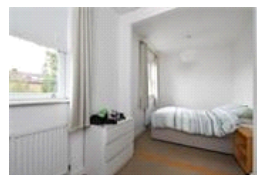


Plough Lane, SE22 (2 bedroom House)

£2,200/month



**Photo
coming
soon**

**Photo
coming
soon**

**Photo
coming
soon**

**Photo
coming
soon**

**Photo
coming
soon**

**Photo
coming
soon**

property description

AVAILABLE MID- NOVEMBER 2025. Tucked away on a quiet cul-de-sac in a highly sought-after pocket of East Dulwich, this delightful two-bedroom terraced home offers a perfect balance of peaceful living and excellent convenience. The property features a bright and welcoming living area, a well-equipped kitchen, and two comfortable bedrooms, ideal for professionals, small families, or those looking to downsize without compromise. The garden provides the perfect setting for relaxing or entertaining, with a lovely sense of privacy. Additional benefits include an allocated parking space, ensuring easy access and peace of mind in this popular residential location. Situated in an enviable pos...

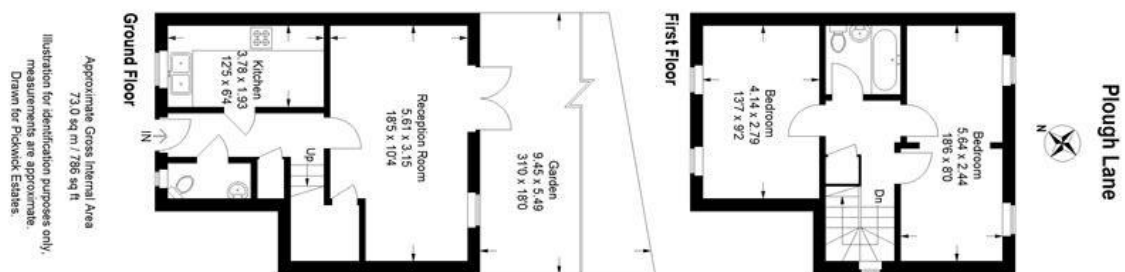
property features

- AVAILABLE MID NOVEMBER 2025
- Two-bedroom terraced home
- Private garden
- Close to sought-after schools and local
- Allocated parking space
- Quiet cul-de-sac location
- Excellent position for Dulwich Village, Dulwich Park & Lordship Lane

ALPS Estates Ltd trading as Pickwick Estates
47 Honor Oak Park Honor Oak
London, SE23 1EA, United Kingdom
Reg No : 7444750
Registered in England

Telephone : 020 3397 1166
Website : <https://www.pickwickestates.co.uk>





For Full EPC Information, click [here](#)