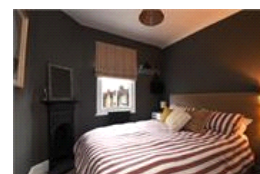
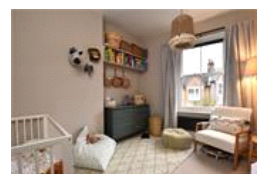
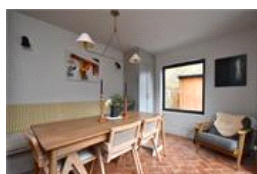
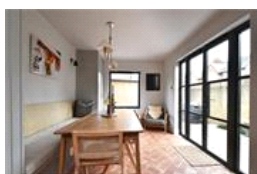
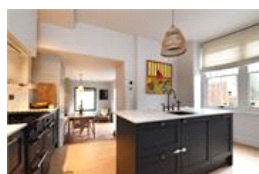
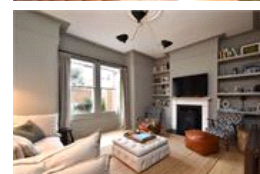
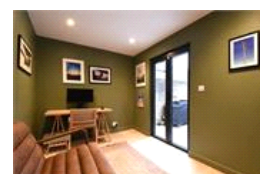
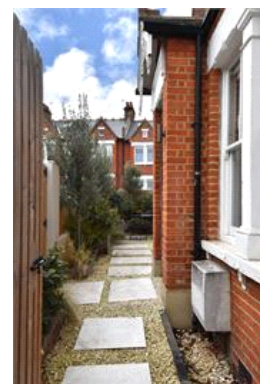
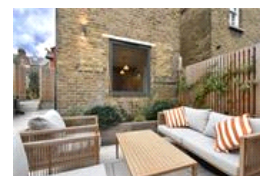


Garthorne Road , SE23 (3 bedroom House)

£3,500/month



property description

Positioned at the end of the terrace on the corner of Garthorne Road and Whatman Road, in the heart of Honor Oak Park, is this beautifully renovated three-bedroom Victorian family home, offered in immaculate condition and finished to a high specification throughout. The property also benefits from a separate converted garage office studio within the rear garden, ideal for home working. Occupying a desirable corner plot, the house enjoys excellent kerb appeal and a wraparound garden that has been thoughtfully landscaped in a low-maintenance, contemporary style, with several seating areas for outdoor living. There are multiple access points, including the main front entrance and gated sid...

property features

ALPS Estates Ltd trading as Pickwick Estates
47 Honor Oak Park Honor Oak
London, SE23 1EA, United Kingdom
Reg No : 7444750
Registered in England

Telephone : 020 3397 1166
Website : <https://www.pickwickestates.co.uk>



- Corner plot with landscaped wraparound garden
- Reception room with wood burner

- Bright living space with garden access
- Stylish family bathroom plus guest WC



020 3397 1166

Garthorne Road , SE23 (3 bedroom House)

£3,500/month



For Full EPC information, click [here](#).