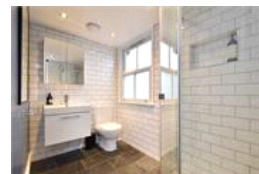
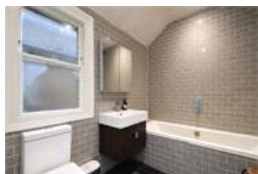
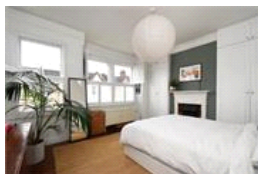
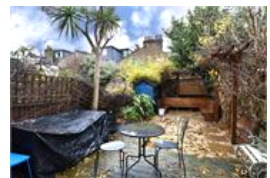


Whatman Road, SE23 (5 bedroom House)

£3,750/month



property description

Beautifully presented and full of character, this five-bedroom Victorian terraced family home is located on a popular residential street in the heart of Honor Oak Park. The property offers excellent kerb appeal with a classic Victorian façade, sash windows and a neat front garden. Inside, the ground floor features a spacious double reception room with original wooden floorboards, high ceilings, a cast-iron fireplace and bay windows with plantation shutters, providing a bright and welcoming living and dining space. To the rear is a well-appointed kitchen-breakfast room fitted with stylish cabinetry, integrated appliances and quartz worktops, with doors opening directly onto a landscaped...

property features

- Five-bedroom Victorian terraced family home
- Well presented throughout with period character
- Spacious double reception room with bay window
- Ideal layout for families
- Modern kitchen-breakfast room with integrated appliances
- Doors opening onto a landscaped rear garden
- Two luxurious bathrooms

ALPS Estates Ltd trading as Pickwick Estates
47 Honor Oak Park Honor Oak
London, SE23 1EA, United Kingdom
Reg No : 7444750
Registered in England

Telephone : 020 3397 1166
Website : <https://www.pickwickestates.co.uk>



