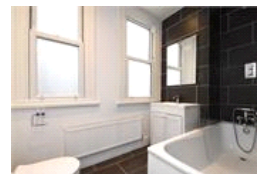
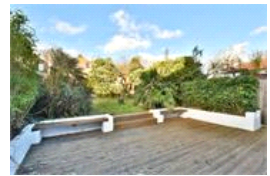


St Julians Farm Road, SE27 (5 bedroom House)

£1,300,000



property description

CHAIN FREE! A truly stunning five double-bedroom, three-storey semi-detached Victorian family home, enviably positioned on one of SE27's most prestigious residential roads. Offering over 2,000 sq ft (186 sq m) of beautifully proportioned living space, this impressive home has been recently refurbished and benefits from a 60ft (18m) private rear garden with useful side-return access. The property presents an attractive Victorian façade with exposed brickwork, detailed masonry and newly fitted double-glazed windows. Set back from the street behind a walled front garden and raised above street level, it enjoys an excellent sense of privacy. A few steps lead to an elegant porch with an origi...

property features

- Stunning five double bedroom semi-detached Victorian family home
- Over 2,000 sq ft (186 sq m) of beautifully refurbished living space
- 60ft private landscaped rear garden with valuable side-return access
- Impressive 6m+ kitchen / dining / entertaining space with bi-fold doors

ALPS Estates Ltd trading as Pickwick Estates
8 Woodwarde Road Dulwich
London, SE22 8UJ, United Kingdom
Reg No : 4270797
Registered in England

Telephone : 020 3397 1144
Website : <https://www.pickwickestates.co.uk>





For Full EPC information, click [here](#)