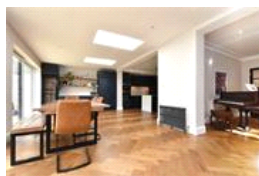
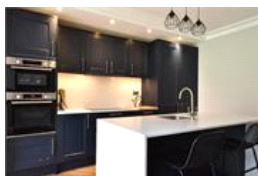
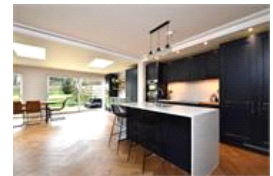
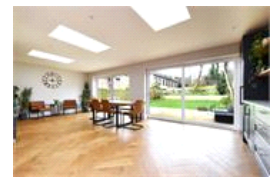


Underhill Road , SE22 (5 bedroom House)

£2,000,000 (OIEO)



## property description

An exceptional five-bedroom, three-bathroom detached family residence, enviably positioned in the heart of East Dulwich, this beautifully extended and meticulously renovated home offers approaching 2,750 sq ft of impeccably designed living space. Blending refined contemporary finishes with elegant period character, the property is awash with natural light and provides a superb balance of sophistication and warmth. Set behind a generous frontage, the house benefits from a substantial private driveway offering secure off-street parking for multiple vehicles, alongside a beautifully landscaped west-facing rear garden — ideal for both entertaining and family life. Entry is via a side retur...

## property features

- An exceptional five-bedroom, three-bathroom detached family residence
- Beautifully extended and meticulously renovated home offers approaching 2,750 sq ft
- Beautifully landscaped west-facing rear garden
- Stunning full-width kitchen, dining and entertaining space
- Utility room, guest WC and garage store

ALPS Estates Ltd trading as Pickwick Estates  
8 Woodwarde Road Dulwich  
London, SE22 8UJ, United Kingdom  
Reg No : 4270797  
Registered in England

Telephone : 020 3397 1144  
Website : <https://www.pickwickestates.co.uk>





For Full EPC information, click [here](#)