



property description

Charming and elegant, this semi-detached Victorian cottage is set on one of Sydenham's most exclusive and historic streets, offering a rare blend of character, style and modern comfort. The property comprises a spacious reception room, a beautifully appointed kitchen/diner, two double bedrooms, a generous family bathroom, side return access and a landscaped, private west-facing rear garden. The house has been meticulously maintained and thoughtfully updated by the current owner to an impeccable standard. The décor is both refined and inviting, carefully balancing a contemporary finish with the period charm and character that define this delightful home. Tucked just off Kirkdale, the loc...

property features

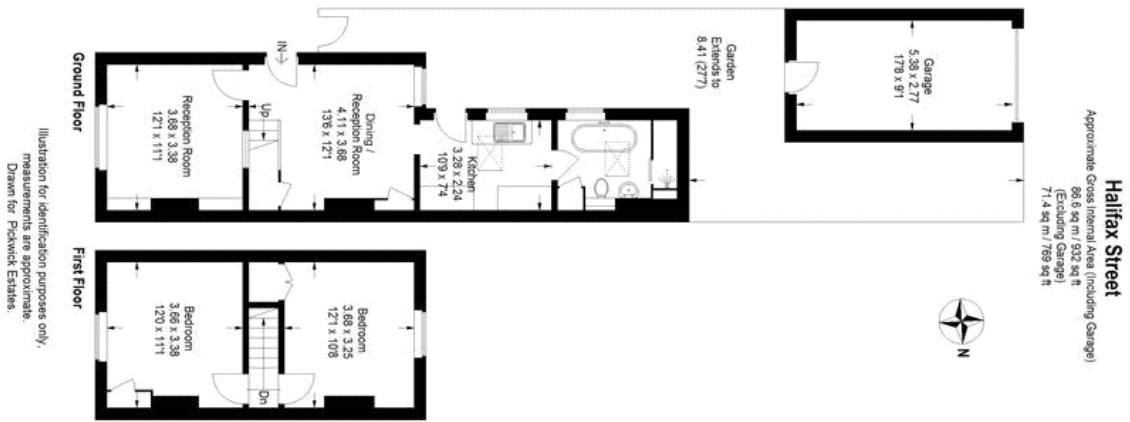
- Charming and elegant two double bedroom Victorian semi detached Cottage
- Set on one of Sydenham's most historic streets
- Secluded private west facing rear garden, recently landscaped
- Beautifully appointed kitchen
- Versatile reception/dining room
- Generous family bathroom
- Quiet residential neighbourhood

ALPS Estates Ltd trading as Pickwick Estates
47 Honor Oak Park Honor Oak
London, SE23 1EA, United Kingdom
Reg No : 7444750
Registered in England

Telephone : 020 3397 1166
Website : <https://www.pickwickestates.co.uk>



Halifax Street , SE26 (2 bedroom House) £650,000



For Full EPC information, click [here](#)