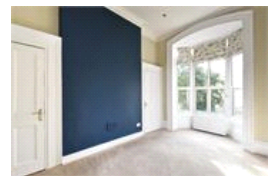
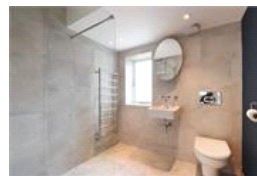
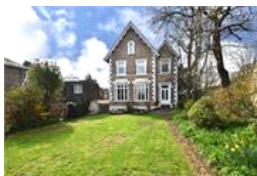
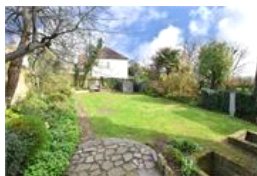
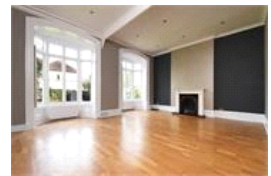
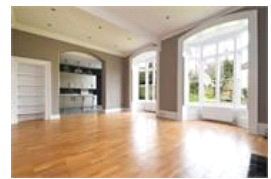


Honor Oak Road , SE23 (2 bedroom Flat)

£675,000 (OIEO)



property description

Occupying the entire ground floor of an imposing detached Victorian residence, this exceptional two-bedroom maisonette is rich in period elegance, character, and charm. Prominently positioned on the corner of Manor Mount in the heart of Forest Hill, SE23, the property enjoys a commanding presence along with breathtaking far-reaching views across Forest Hill and beyond towards Kent. Accessed via a grand private entrance, the home welcomes you through a striking entrance and an impressive, church-style gothic front door, opening into a spacious and inviting entrance hall. Internally, the property offers approximately 1,029 sq ft (95.8 sqm) of beautifully presented accommodation, recently re...

property features

- An incredible two double bedroom maisonette is rich in period elegance, character, and charm
- Offers approximately 1,029 sq ft (95.8 sqm) of beautifully presented accommodation, recently re...
- Character, charm, period features, high ceilings, cornicing, bay windows and fireplaces
- Massive private rear garden 70ft x 48 ft!
- Huge 9m wide reception room

ALPS Estates Ltd trading as Pickwick Estates
47 Honor Oak Park Honor Oak
London, SE23 1EA, United Kingdom
Reg No : 7444750
Registered in England

Telephone : 020 3397 1166
Website : <https://www.pickwickestates.co.uk>



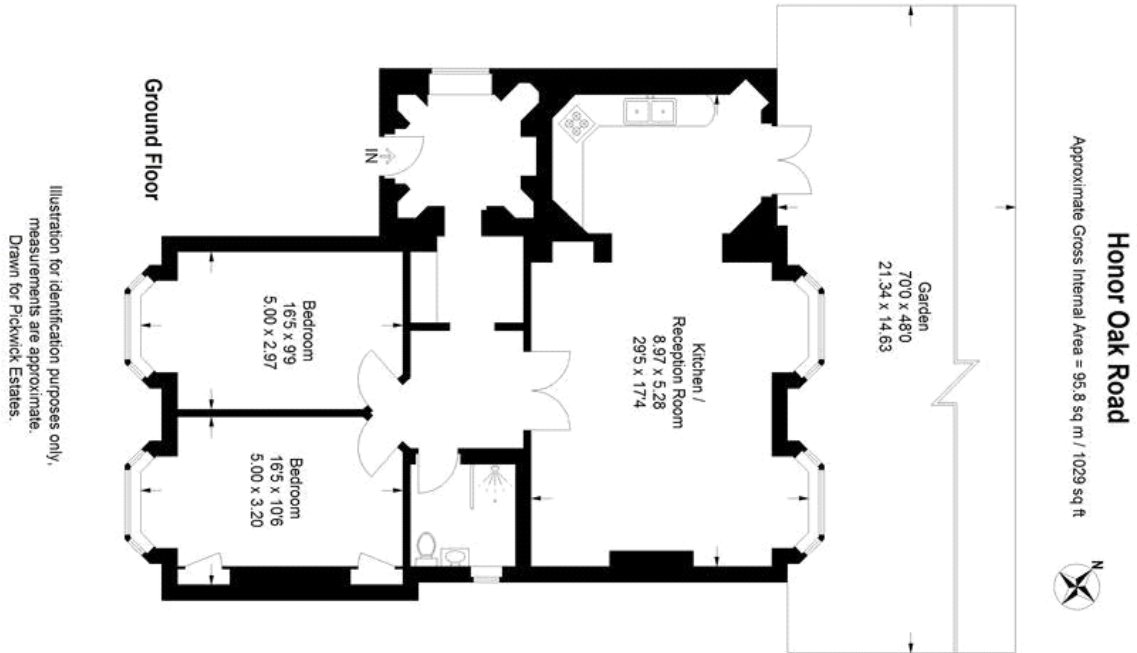
- Fully fitted integrated kitchen



020 3397 1166

Honor Oak Road , SE23 (2 bedroom Flat)

£675,000 (OIEO)



For Full EPC information, click [here](#)