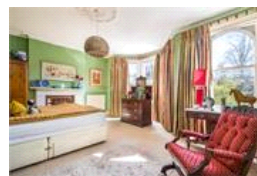
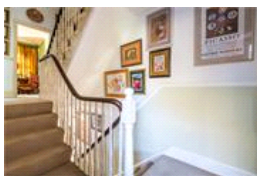
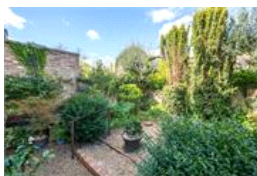
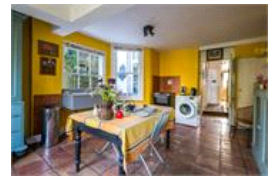
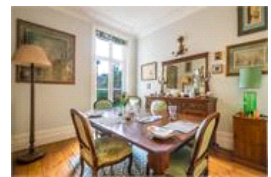
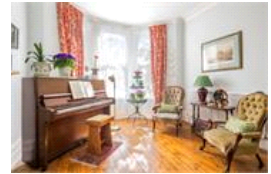


The Gardens , SE22 (5 bedroom House)

£1,500,000



property description

An exceptional and exceedingly rare opportunity to acquire one of only a handful of late Victorian family homes, directly overlooking this iconic garden square in East Dulwich, moments from Peckham Rye Park and Common. Positioned on the highly coveted The Gardens, a peaceful and secluded cul-de-sac, this enchanting address centres around a beautifully maintained private residents' garden. Secure, mature and rich in planting, offering a truly unique sense of tranquillity and community in the heart of South East London. This charming semi-detached Victorian home extends to almost 1,900 sq ft (173.63 sqm) across three floors and presents a rare opportunity to restore and reimagine a magni...

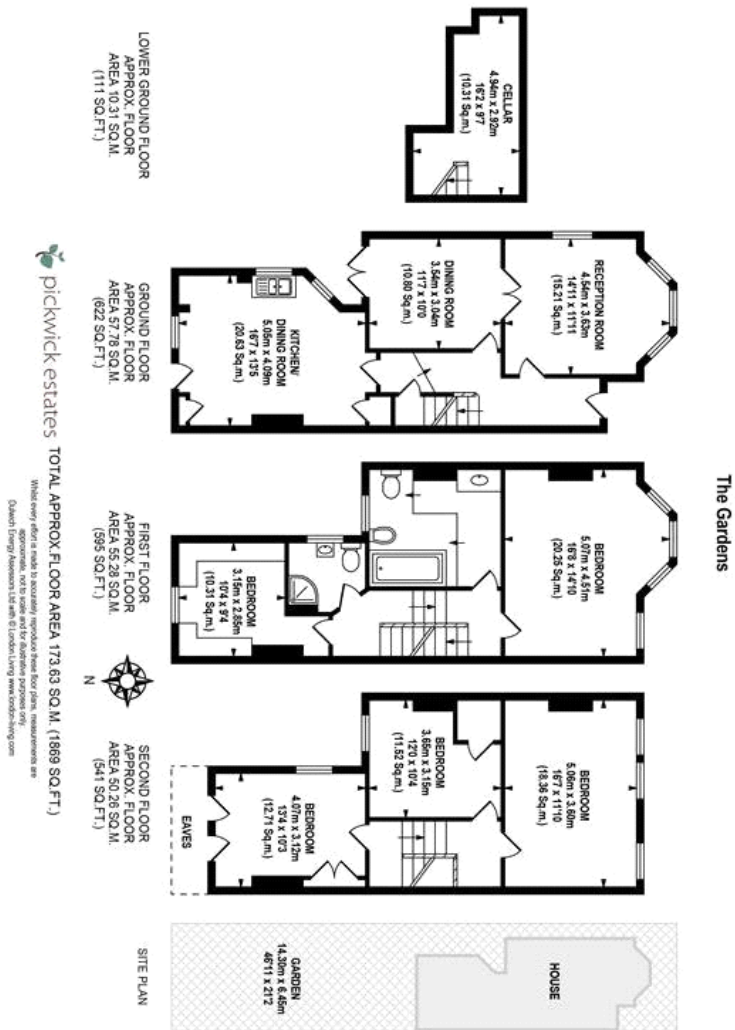
property features

- Rare opportunity to acquire this 5 double bedroom Victorian semi detached family home
- Overlooking an iconic garden square in the heart of East Dulwich
- Double reception room with feature fireplace and a bay window
- Offering almost 1900 sqft of floor space
- Kitchen dinina room with direct access to the

ALPS Estates Ltd trading as Pickwick Estates
8 Woodwarde Road Dulwich
London, SE22 8UJ, United Kingdom
Reg No : 4270797
Registered in England

Telephone : 020 3397 1144
Website : <https://www.pickwickestates.co.uk>





For Full EPC Information, click [here](#)