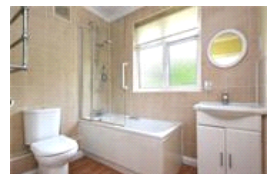
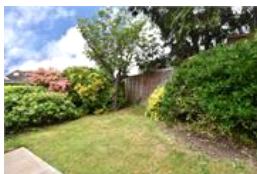
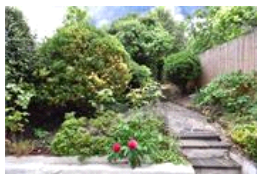
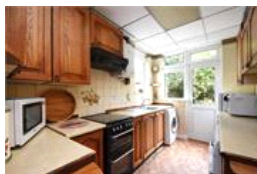
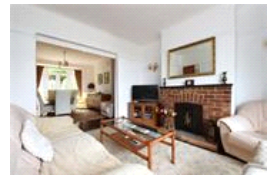


Ringmore Rise , SE23 (3 bedroom House)

£875,000



property description

CHAIN FREE SALE – Occupying a prime corner plot at the end of the highly sought-after Ringmore Rise, this attractive three-bedroom 1930s semi-detached family home enjoys breath-taking panoramic views across the London skyline. Positioned within the desirable Tewkesbury Lodge Estate, renowned for its strong sense of community and peaceful residential setting, the property benefits from exceptional privacy and seclusion thanks to its elevated position and wraparound plot. Set back above street level, the house offers superb kerb appeal with handsome double-glazed bay windows, a generous entrance porch and a beautifully elevated outlook. A street-level garage and private driveway provide ...

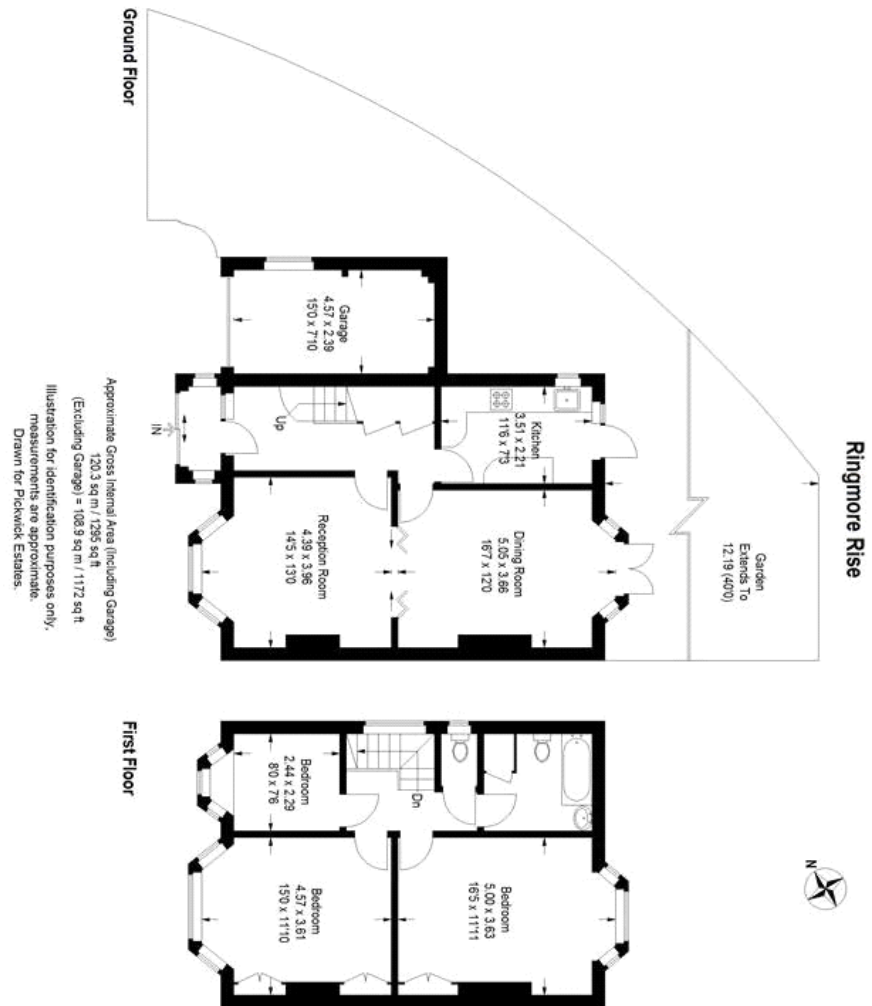
property features

- 3 bedroom 1930's semi detached family home
- CHAIN FREE sale
- Breath-taking panoramic views across the London skyline
- Driveway and garage
- Private rear garden
- Two reception rooms
- Family bathroom

ALPS Estates Ltd trading as Pickwick Estates
47 Honor Oak Park Honor Oak
London, SE23 1EA, United Kingdom
Reg No : 7444750
Registered in England

Telephone : 020 3397 1166
Website : <https://www.pickwickestates.co.uk>





For Full EPC information, click [here](#)