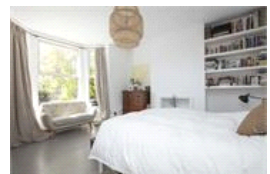
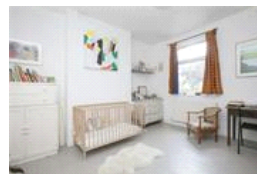
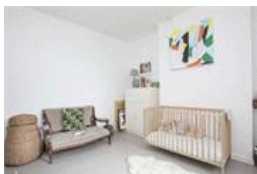
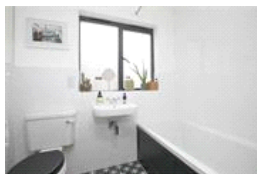
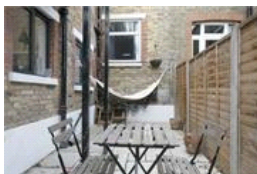
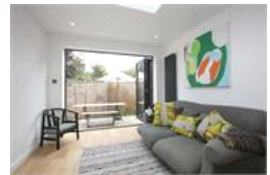


Stondon Park, SE23 (2 bedroom Flat)

£525,000



## property description

CHAIN FREE - Occupying the entire ground floor of this handsome Victorian house is this well-presented two double bedroom garden flat, with double glazing throughout and ideally positioned between Honor Oak Park and Crofton Park and benefitting from a private southeast-facing garden. The property offers well-balanced accommodation throughout, combining attractive period character with tasteful contemporary finishes. To the front are two generous double bedrooms arranged back-to-back, both enjoying high ceilings and exposed original floorboards which have been sealed and painted. The principal bedroom is enhanced by a large bay window allowing for excellent natural light, while the second ...

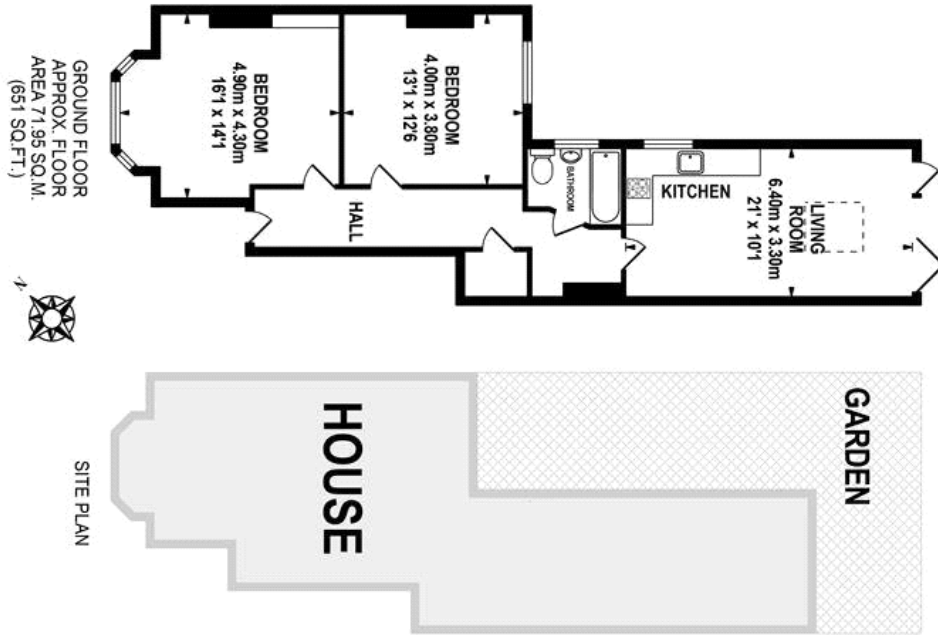
## property features

- Ground floor flat
- Two double bedrooms
- Decorated to a very high spec.
- Available November
- Private garden to rear
- Newly extended Kitchen reception room
- Available to view now.
- Close proximity to Honor Oak and Crofton

ALPS Estates Ltd trading as Pickwick Estates  
47 Honor Oak Park Honor Oak  
London, SE23 1EA, United Kingdom  
Reg No : 7444750  
Registered in England

Telephone : 020 3397 1166  
Website : <https://www.pickwickestates.co.uk>





**pickwick estates**

TOTAL APPROX FLOOR AREA 71.95 SQ.M. (774 SQ.FT.)

Whilst every effort is made to accurately reproduce floor plans, measurements are approximate and to be used for guidance purposes only.  
© Dulwich Energy Assessors Ltd. www.dea.co.uk

For Full EPC Information, click [here](#)