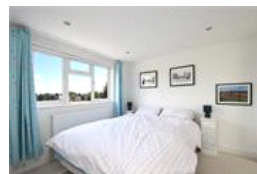
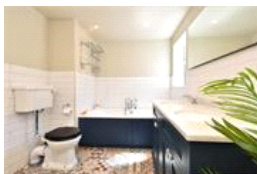
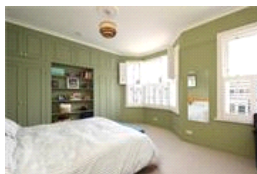
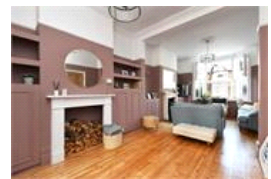


Colfe Road , SE23 (5 bedroom House)

£1,100,000



property description

Full of character, charm and timeless Victorian elegance is this substantial five-bedroom family home, enviably positioned on a peaceful and highly sought-after residential street. Offering two bathrooms, a downstairs WC, off-street parking and approximately 1,669 sq ft of beautifully arranged accommodation across three floors, the property effortlessly combines original period detailing with stylish, practical modern living. A standout feature is the exceptional landscaped rear garden extending approximately 108 ft, complete with a versatile workshop/studio at the far end — ideal for creative pursuits. This handsome Victorian residence immediately impresses with its striking façade, e...

property features

- Substantial five-bedroom Victorian family home
- Approximately 1,669 sq ft of beautifully arranged accommodation across three floors
- Off-street parking
- Generous double reception room
- Utility room and downstairs WC
- Kitchen dining room
- Two bathrooms

ALPS Estates Ltd trading as Pickwick Estates
47 Honor Oak Park Honor Oak
London, SE23 1EA, United Kingdom
Reg No : 7444750
Registered in England

Telephone : 020 3397 1166
Website : <https://www.pickwickestates.co.uk>



