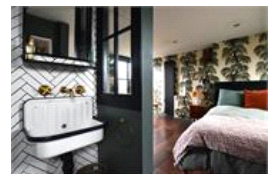
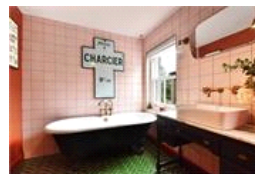
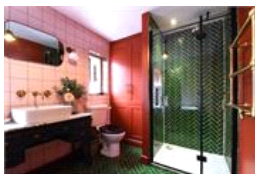
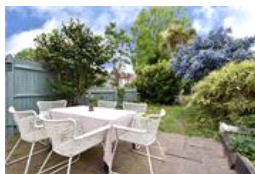
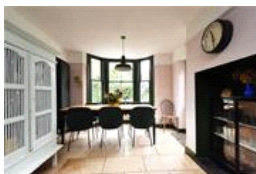
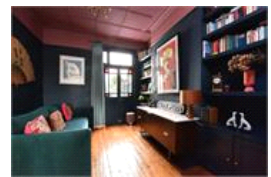


Colfe Road , SE23 (5 bedroom House)

£1,100,000



property description

Resonating with an abundance of period character and design-led charm is this stunning five-bedroom Victorian family home, offering approximately 1,735 sq ft of beautifully curated living space arranged across three floors. Positioned on a peaceful and highly sought-after residential street, the property blends elegant Victorian architecture with sophisticated contemporary styling, creating a home that has previously been featured in the press for its inspiring interiors and creative renovation. The house enjoys exceptional kerb appeal with its handsome brick façade, bay windows, decorative masonry and traditional tessellated pathway, while also benefitting from valuable off-street parkin...

property features

- Design-led charming five-bedroom Victorian family home
- 110 ft (33.5m) long landscaped rear garden with two seating areas and a large workshop studio
- approximately 1,735 sq ft of beautifully curated living space arranged across three floors
- Kitchen dining room
- Two stunning bathrooms - one en-suite to the

ALPS Estates Ltd trading as Pickwick Estates
47 Honor Oak Park Honor Oak
London, SE23 1EA, United Kingdom
Reg No : 7444750
Registered in England

Telephone : 020 3397 1166
Website : <https://www.pickwickestates.co.uk>





For Full EPC information, click [here](#)