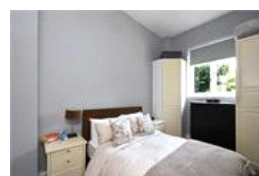
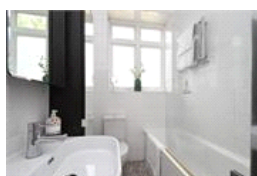
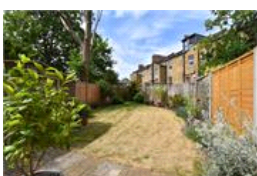
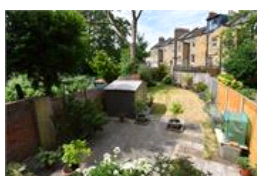
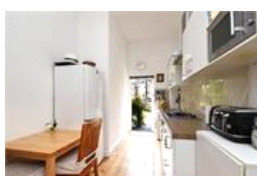
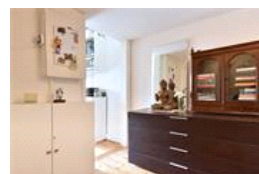
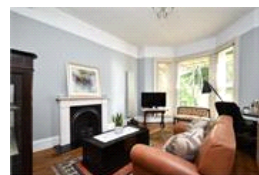


Peckham Rye , SE22 (1 bedroom Flat)

£550,000



property description

Occupying the entire raised ground floor of an elegant semi-detached Victorian residence, this exceptional one-bedroom flat enjoys a truly enviable position directly overlooking the 64 acres of Peckham Rye and benefits from a remarkable southwest-facing private garden extending to approximately 68ft (20m). Upon approach, it is impossible not to be impressed by the striking Victorian façade. Set back from the road behind a walled communal front garden, the building boasts attractive exposed brickwork and traditional sash windows. A small flight of steps leads to the grand raised ground floor entrance, where an impressive original front door opens into the communal hallway. The flat itse...

property features

- Exceptional one-bedroom flat enjoys a truly enviable position directly overlooking Peckham Rye
- Remarkable southwest-facing private garden
- Generous entrance hall with plenty of storage
- Large characterful front reception room
- Double glazed windows throughout
- Bathroom

ALPS Estates Ltd trading as Pickwick Estates
8 Woodwarde Road Dulwich
London, SE22 8UJ, United Kingdom
Reg No : 4270797
Registered in England

Telephone : 020 3397 1144
Website : <https://www.pickwickestates.co.uk>



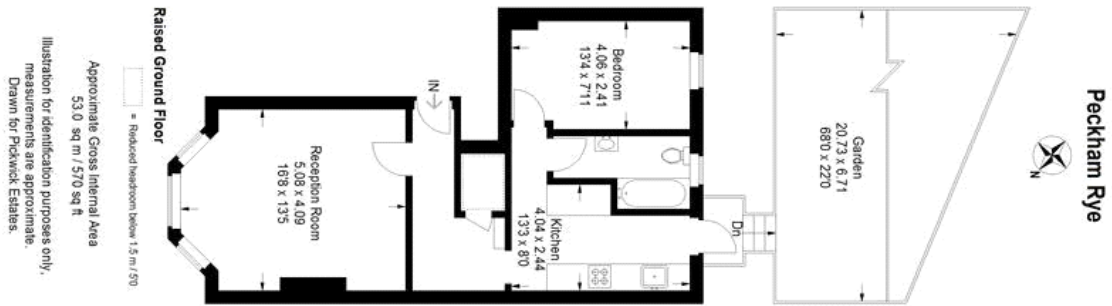
- Kitchen breakfast room



020 3397 1144

Peckham Rye , SE22 (1 bedroom Flat)

£550,000



For Full EPC information, click [here](#)