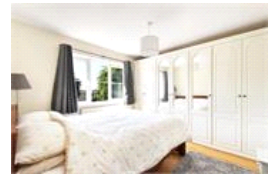
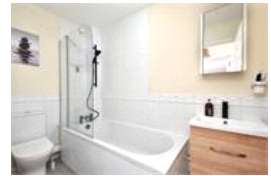


Blythe Hill Place, SE23 (2 bedroom Flat)

£390,000



property description

Situated on the ground floor of a well-maintained modern development, this attractive two-bedroom apartment offers well-balanced accommodation extending to approximately 643 sq ft (59.7 sq m), double glazing throughout and a SHARE OF FREEHOLD. Benefiting from a separate kitchen, off-street parking, communal gardens and a secure entry phone system, the property presents an excellent opportunity for first-time buyers, downsizers and investors alike. The apartment is neutrally decorated throughout and enjoys a practical layout. A spacious entrance hall with engineered wood flooring provides access to all principal rooms, enhancing the sense of space and flow throughout the home. The bright and generous reception room is positioned to the front of the building and benefits from dual-aspect windows, including an attractive bay window overlooking the communal gardens. The abundance of natural light, together with the engineered wood flooring, creates a welcoming and comfortable living space. The separate kitchen is fitted with a range of wall and base units and incorporates a ...

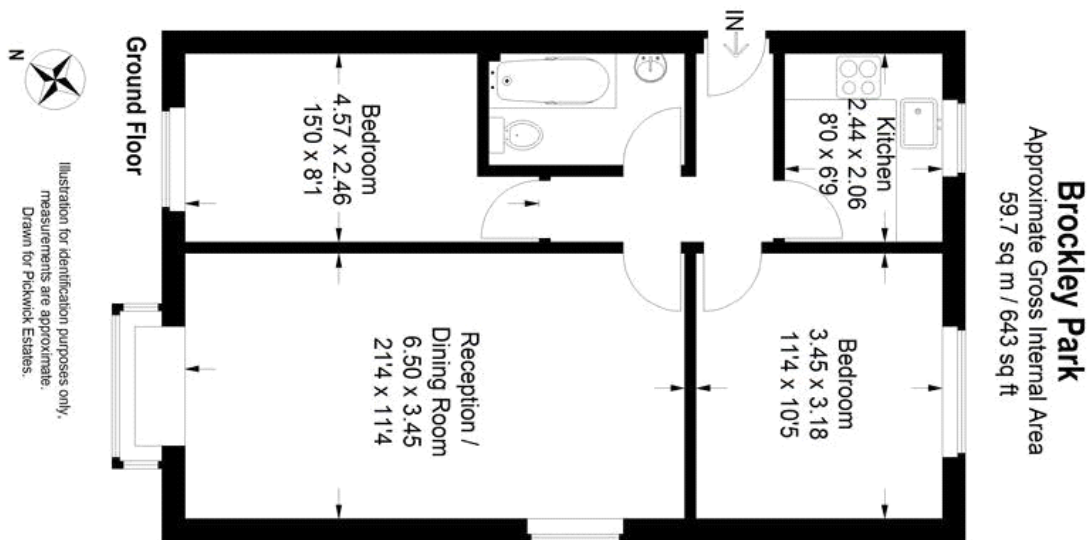
property features

- Attractive two double bedroom apartment
- Ground floor of a well maintained modern building
- SHARE OF FREEHOLD
- Double glazing throughout
- Newly updated bathroom
- Fully fitted kitchen
- Allocated off street parking
- Bright and spacious reception room

ALPS Estates Ltd trading as Pickwick Estates
47 Honor Oak Park Honor Oak
London, SE23 1EA, United Kingdom
Reg No : 7444750
Registered in England

Telephone : 020 3397 1166
Website : <https://www.pickwickestates.co.uk>





For Full EPC information, click [here](#)