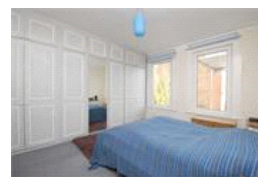


Beauval Road, SE22 (5 bedroom House)

£2,525/month



## property description

Families or 2 sharers only. A large spacious end of terrace house on this beautiful tree lined street in Dulwich. The property has 4/5 bedrooms (4 doubles) , 2 reception rooms, Kitchen, utility room and a low maintenance rear garden. The property would be ideal for a family. Beauval Road is in a super location, close to Dulwich Village, Dulwich Park and amenities of Lordship Lane. The nearest rail stations are North Dulwich (Blackfriars & London Bridge) and East Dulwich, (London Bridge), on Lordship Lane there are regular bus services that head into town 24hrs a day. This is a great house that ticks many of the boxes. Available

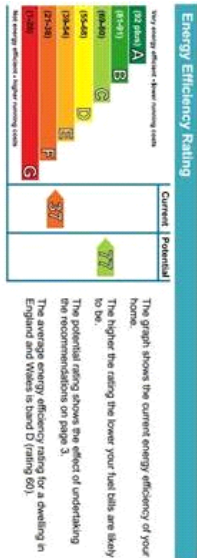
## property features

- Large 4/5 Bedroom House
- 2 Large Reception Rooms
- Kitchen & Utility
- 4 DOUBLE Bedrooms
- Easily Maintainable Rear Garden
- Families or 2 sharers only

Beauval Road, SE22 (5 bedroom House)

£2,525/month





For Full EPC Information, click [here](#)