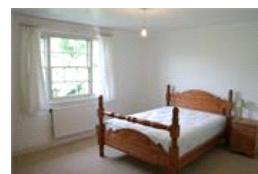
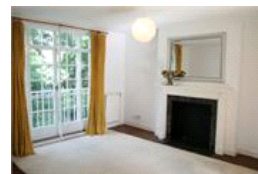


Langford Green, SE5 (4 bedroom House)

£2,700/month



property description

FAMILIES ONLY. Charming, secure development sandwiched between Denmark Hill and East Dulwich stations is this fabulous 4 bedroom townhouse with off-street parking. Set on three floors and recently refurbished to a high standard overlooking beautifully landscaped, communal gardens. Briefly comprising 2 reception rooms, balcony, 4 double bedrooms, fitted kitchen and bathroom, downstairs WC . Available December.

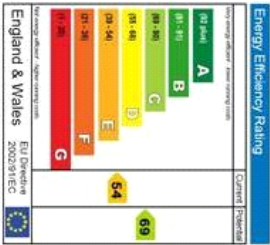
property features

- Available December
- 4 bedroom town house
- Fully fitted Kitchen and bathroom
- FAMILIES ONLY.
- Downstairs WC
- 2 reception rooms
- Off street parking

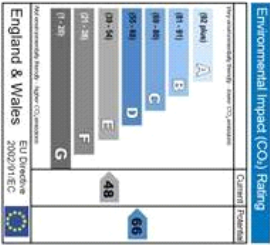
Langford Green, SE5 (4 bedroom House)

£2,700/month





The energy efficiency rating is a measure of the overall efficiency of a home. The higher the rating, the more energy efficient the home is and the lower the fuel bills are likely to be.



The environmental impact rating is a measure of a home's impact on the environment in terms of carbon dioxide emissions. The higher the rating, the less impact it has on the environment.

For Full EPC information, click [here](#)