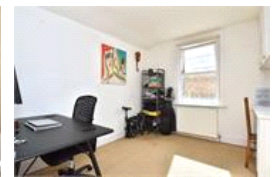
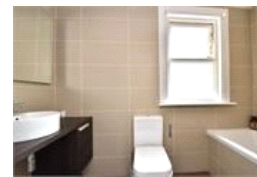
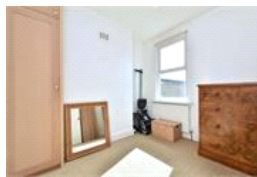
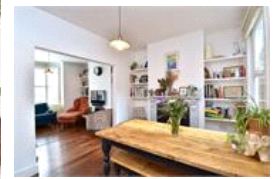
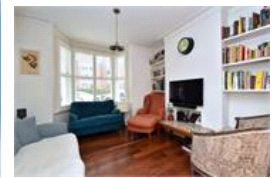


Waveney Avenue, SE15 (3 Bedroom House)

£900,000



## property description

A truly charming three double bedroom Victorian terraced house in a sought after tree-lined street close to Peckham Rye Park. The house is decorated and presented in good decorative order and has some really charming features including plantation shutters, fireplaces, sash windows and beautiful wooden floors. The property has a kitchen/breakfast room a separate dining room and reception room and a lovely south-east facing garden. The Kitchen benefits from underfloor heating. Upstairs, there are three double bedrooms and the option to go into the loft (subject to planning). The luxurious bathroom has been done contemporary style and is also serviced by underfloor heating. Waveney ro...

## property features

- Victorian terraced house
- Double through room reception
- Fully fitted kitchen
- Quiet residential road
- South East facing garden
- Close to amenities

ALPS Estates Ltd trading as Pickwick Estates  
 47 Honor Oak Park Honor Oak  
 London, SE23 1EA, United Kingdom  
 Reg No : 7444750  
 Registered in England

Telephone : 020 3397 1166  
 Website : <https://www.pickwickestates.co.uk>



Wavenev Road



Approximate Gross Internal Area  
99 sq m / 1066 sq ft  
Illustration for identification purposes only.  
measurements are approximate.  
Drawn for Pickwick Estates



For Full EPC information, click [here](#)