

Ashmead Road , SE8 (4 bedroom House)

£1,050,000 (Guide Price)



**Photo
coming
soon**

**Photo
coming
soon**

property description

Pickwick Estates are proud to present to you this beautify presented four bedroom Victorian home located on a quiet, leafy, desirable road in the St Johns conservation area. There are external steps leading up to the original front door and entrance hall. Alternatively, a few steps down bring you to a second entrance point accessing the lower ground floor. The entrance floor is raised to provide a pretty view at an elevated level, whilst the lower floor is naturally bright. Semi-detached and sporting a garden of almost 120 foot at its longest point, the property benefits original features, is well equipped for growing families and is located just a minutes' walk from transport. An amazing white wisteria smothers the front of the house and complements the front garden. Inside you'll find two elegant reception rooms to your left. Separated if desired, by original double doors, the rooms each retain original period fireplaces with marble surrounds. Original wooden floors, deep skirting boards and coving have all been retained, with plenty of space to relax. The rear room has fitted...

property features

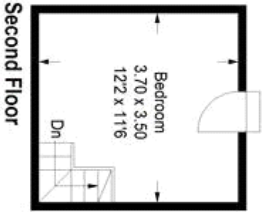
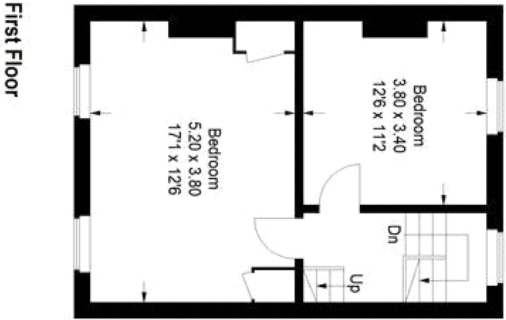
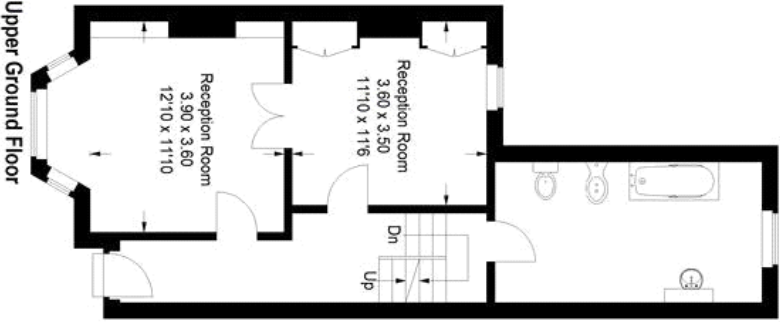
- Victorian house
- Four bedrooms
- Double reception room
- 120ft landscaped garden
- Call to arrange a viewing now.

ALPS Estates Ltd trading as Pickwick Estates
47 Honor Oak Park Honor Oak
London, SE23 1EA, United Kingdom
Reg No : 7444750
Registered in England

Telephone : 020 3397 1166
Website : <https://www.pickwickestates.co.uk>



Ashmead Road



Approximate Gross Internal Area
158.61 sq m / 1707 sq ft
Illustration for identification purposes only.
Measurements are approximate.
Drawn for Pickwick Estates



For Full EPC information, click [here](#)