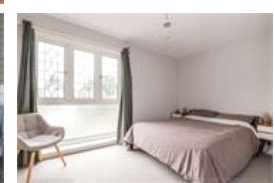
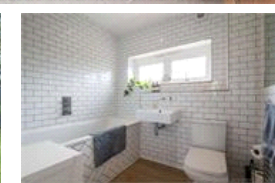
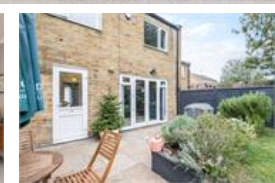
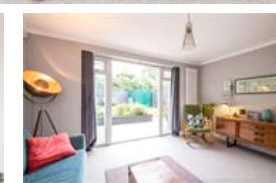


Foxborough Gardens , SE4 (3 bedroom House)

£575,000 (OIEO)



## property description

A beautifully presented three-bedroom, freehold mid-century family home in a quiet residential cul-de-sac in Crofton Park, bordering Ladywell, in close proximity Ladywell Fields and Hilly Fields. Boasting a SOUTH FACING private rear garden, a large reception with direct access to the garden, double glazing throughout, eat in kitchen diner, utility room and a stylish family bathroom. The house is set back from the street by a gated front garden and the house overlooks a green communal lawn. Upon entry there is a generous entrance hall with space for hanging coats and storing shoes. Solid wooden flooring runs seamlessly through to the kitchen and to the handy utility room at the end of the...

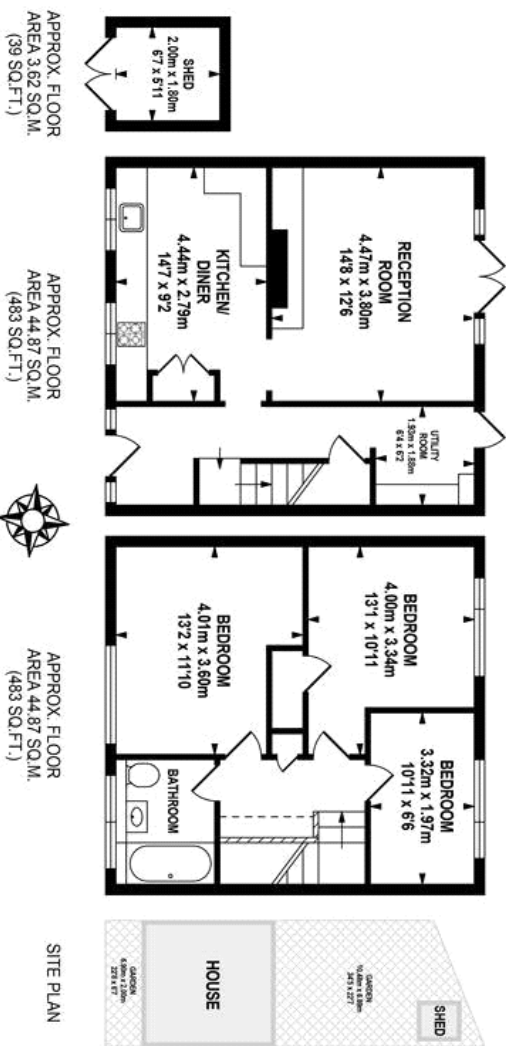
## property features

- A beautifully presented three-bedroom, freehold mid-century family home
- Quiet residential cul-de-sac in Crofton Park
- SOUTH FACING private rear garden
- Double glazing throughout
- Large reception room
- Kitchen dining room
- Utility room
- Lavishly decorated family bathroom

ALPS Estates Ltd trading as Pickwick Estates  
47 Honor Oak Park Honor Oak  
London, SE23 1EA, United Kingdom  
Reg No : 7444750  
Registered in England

Telephone : 020 3397 1166  
Website : <https://www.pickwickestates.co.uk>





pickwick estates

Whilst every effort is made to accurately reproduce these floor plans, measurements are approximate, not to scale and for illustrative purposes only.  
© Dulwich Energy Assessors Ltd www.dulwich.co.uk

For Full EPC information, click [here](#)