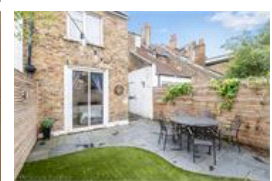
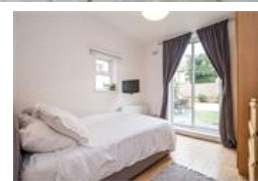
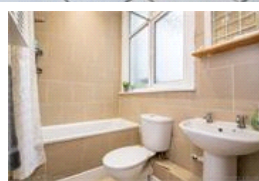
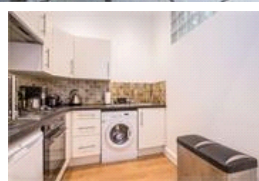
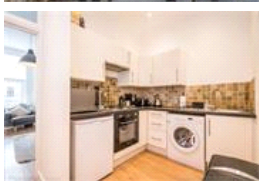
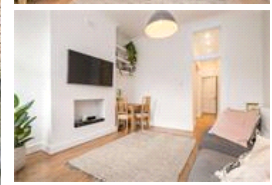
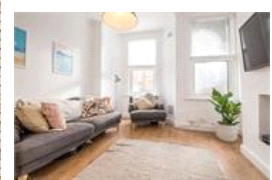
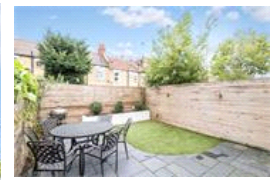


Honor Oak Park, SE23 (2 bedroom Flat)

£425,000



property description

Set on the ground floor of this lovely Victorian house is this charming, well maintained 2 bedroom garden flat sold with a SHARE OF FREEHOLD and double glazing throughout. The property is offered to the market in excellent condition and is conveniently located moments from Honor Oak Park train station and an abundance of local amenities. At the front of the building is a cosy reception room benefiting from solid wood flooring and two large double glazed windows that illuminates the room with natural light. The kitchen is located directly off the reception room through double doors which gives an option to make it semi open planned. The kitchen is in excellent condition with a good amount of ...

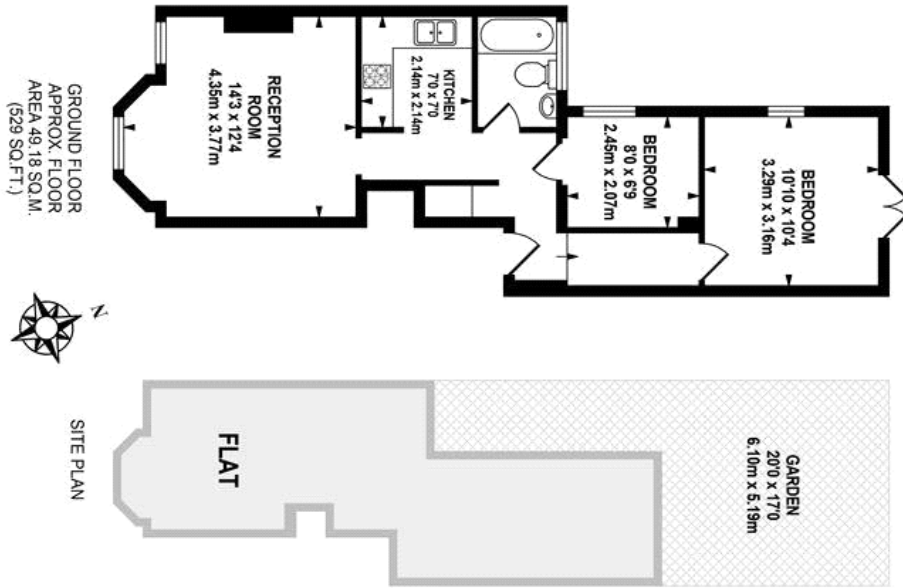
property features

- Ground floor 2 bedroom Victorian flat.
- Fully fitted bathroom.
- Bright and airy.
- Close to Honor Oak park station and high...
- Double glazing throughout
- SHARE OF FREEHOLD
- Direct access to rear private garden

ALPS Estates Ltd trading as Pickwick Estates
 47 Honor Oak Park Honor Oak
 London, SE23 1EA, United Kingdom
 Reg No : 7444750
 Registered in England

Telephone : 020 3397 1166
 Website : <https://www.pickwickestates.co.uk>





GROUND FLOOR
APPROX. FLOOR
AREA 49.18 SQ.M.
(529 SQ.FT.)

SITE PLAN

TOTAL APPROX.FLOOR AREA 49.18 SQ.M. (529 SQ.FT.)

Whilst every effort is made to accurately reproduce these floor plans, measurements are approximate, not to scale and for illustrative purposes only.
© Dulwich Energy Assessors Ltd. www.delaidd.co.uk



For Full EPC information, click [here](#)