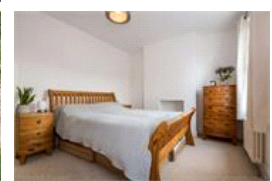
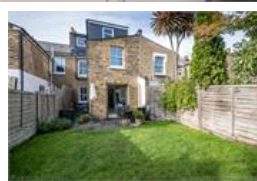
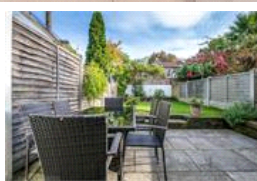
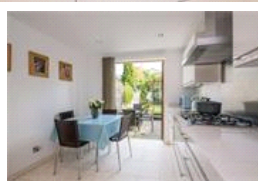
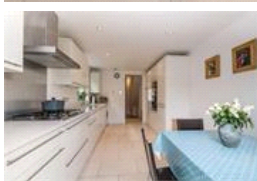
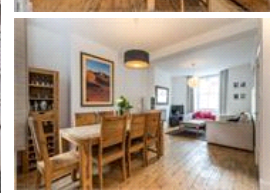
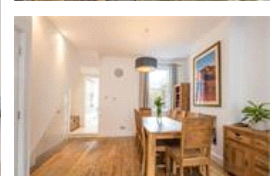
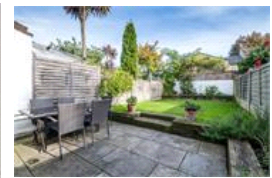


Waghorn Street, SE15 (5 bedroom House)

£1,150,000



## property description

A beautifully enhanced five double bedroom, two-bathroom Victorian terraced family home with east-facing and part-walled, landscaped garden, on a pretty residential street that's just a five-minute walk from both Bellenden Road and Peckham Rye Station. Permit parking is on-street, for residents. Freehold. A small walled front garden with a grey sandstone path sets the house back from the pavement offering additional privacy. The exterior is a typical pretty Victorian façade with old London stock brickwork and a bay window on the ground floor with detailed masonry surrounding the sash windows. An inset porch protects the Victorian style door for those rainy days. The hallway leads throu...

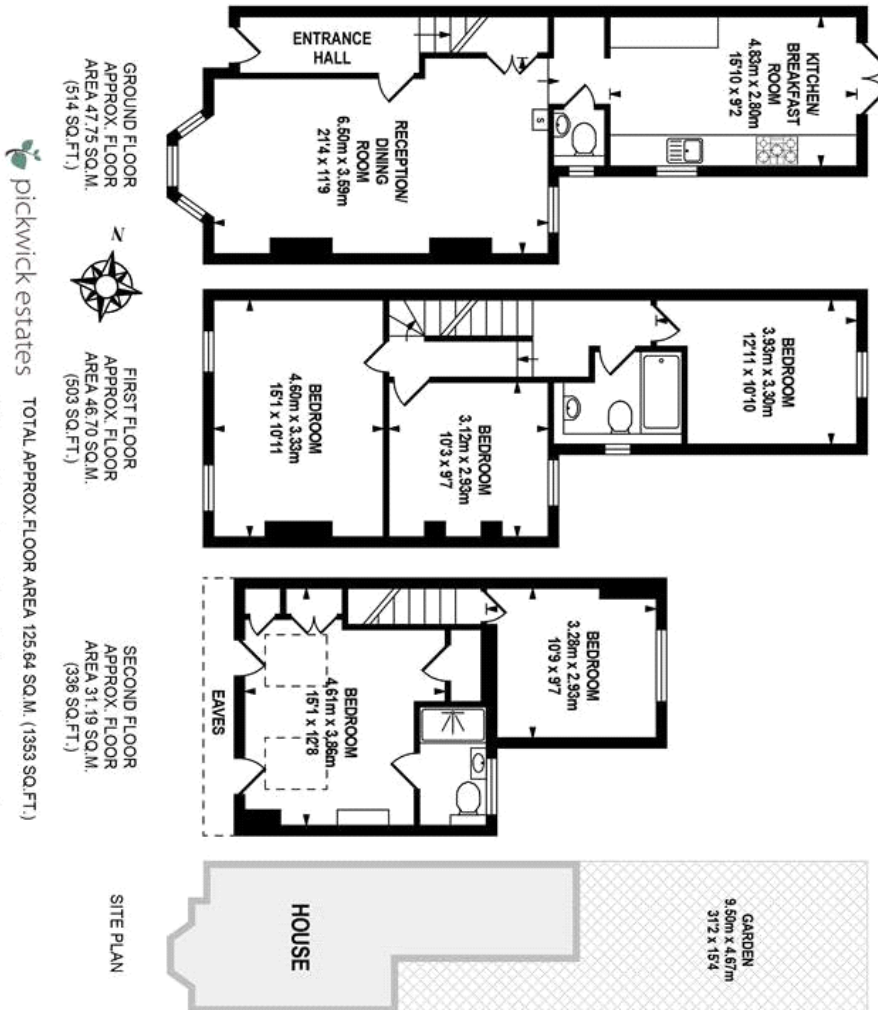
## property features

- Beautifully enhanced 5 bedroom Victorian family home
- Located in the heart of Peckham
- Landscaped private rear garden and walled front garden
- Double reception room
- Kitchen dining room
- Family bathroom
- Stylish decor throughout

ALPS Estates Ltd trading as Pickwick Estates  
 47 Honor Oak Park Honor Oak  
 London, SE23 1EA, United Kingdom  
 Reg No : 7444750  
 Registered in England

Telephone : 020 3397 1166  
 Website : <https://www.pickwickestates.co.uk>





For Full EPC information, click [here](#)