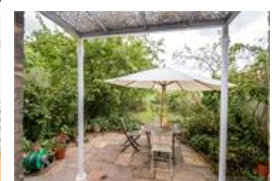
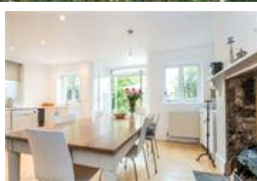
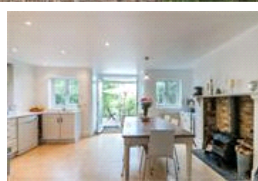
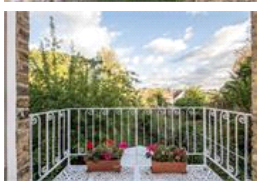
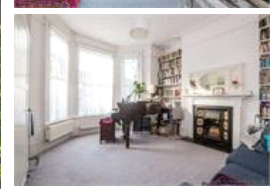
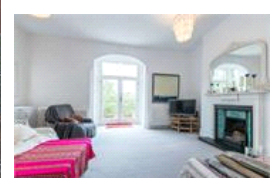
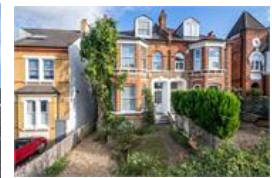


Overhill Road, SE22 (5 bedroom House)

£1,350,000



property description

Set over 4 floors, offering an abundance of space and plenty of character and charm is this handsome 5-bedroom Victorian semi-detached family home on this popular residential street in East Dulwich. The house benefits from a large SOUTH FACING rear garden that stretches over 100 ft, a bright and spacious rear reception room with a cast iron balcony overlooking the garden, a large front reception room, off street parking (2 cars), a top of the range Worcester Bosch (boiler) installed 2 years ago, double glazing to front of house, a large kitchen dining room leading directly to the garden, lots of original period features and offering 2290 sq ft (212.82 sqm) of floorspace. The house offer...

property features

- Handsome 5 bedroom Victorian semi-detached family home
- Over 100ft of private SOUTH FACING rear garden
- Off street parking, 30 ft front garden and side return access
- Two large reception rooms, one with a SOUTH FACING cast iron balcony overlooking the garden
- Large kitchen dining room with direct access to the garden

ALPS Estates Ltd trading as Pickwick Estates
47 Honor Oak Park Honor Oak
London, SE23 1EA, United Kingdom
Reg No : 7444750
Registered in England

Telephone : 020 3397 1166
Website : <https://www.pickwickestates.co.uk>





For Full EPC information, click [here](#)