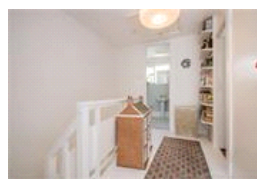
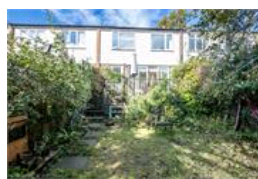
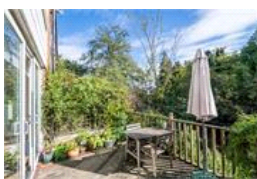
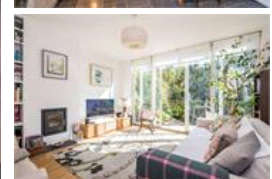


Talmage Close , SE23 (3 bedroom House)

£575,000 (OIEO)



property description

GUIDE PRICE £525k - £550k. A charming three-bedroom, FREEHOLD mid-century family home in a quiet residential cul-de-sac. Boasting a SOUTH FACING private rear garden, a large reception with direct access to the garden, double glazing throughout, eat in kitchen diner, study and a stylish family bathroom. The house is located twixt Forest Hill and Honor Oak Park with all the amenities both areas have to offer, including access to both stations, within 225 meters of the highly rated Fairlwan Primary school, plenty of shops bars, cafes and restaurants as well as the green open spaces of Horniman Gardens, One Tree Hill and Devonshire Nature reserve which is literally at the end of the street! ...

property features

- Charming 3 bedroom mid century FREEHOLD family home
- Quiet cul-de-sac with a great family community and WhatsApp group
- SOUTH FACING private rear garden
- Good size kitchen dining room
- Sunny rear reception room leading to the SOUTH facing rear garden
- Downstairs study room
- Double glazing throughout

ALPS Estates Ltd trading as Pickwick Estates
47 Honor Oak Park Honor Oak
London, SE23 1EA, United Kingdom
Reg No : 7444750
Registered in England

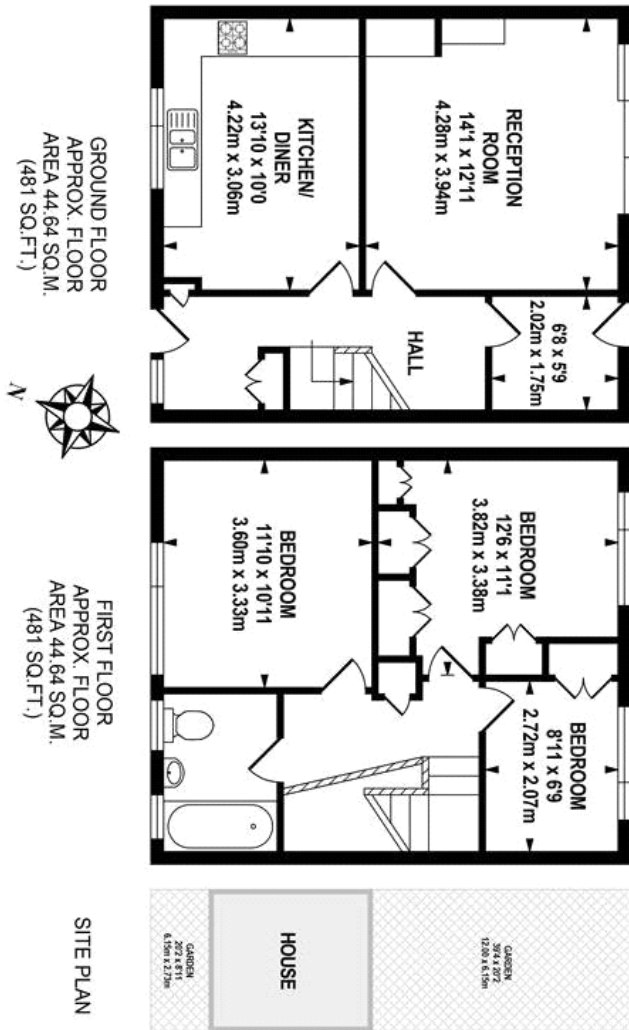
Telephone : 020 3397 1166
Website : <https://www.pickwickestates.co.uk>





TOTAL APPROX. FLOOR AREA 89.28 SQ.M. (962 SQ.FT.)

Whilst every effort is made to accurately reproduce these floor plans, measurements are approximate, not to scale and for illustrative purposes only.
© Dulwich Energy Assessors Ltd. www.dea-ld.co.uk



For Full EPC information, click [here](#)