

Crawthrew Grove , SE22 (3 bedroom House)

£900,000 (Guide Price)



### property description

GUIDE PRICE £900k-£950k. Located within minutes of the hustle and bustle of Lordship Lane and North Cross Road, with East Dulwich station only 500 metres away, this charming 3 double bedroom Victorian mid-terraced family home with a private landscaped rear garden, is located on one of the most popular, yet quiet residential streets in the heart of East Dulwich. Set back from the street by a hedged front garden offering plenty of privacy, the house has an appealing façade of old stock bricks with a large bay window on the ground floor and detailed masonry surrounding the windows with a lovely arched porch protecting the Victorian front door. Upon entry, the entrance hall has lovely ...

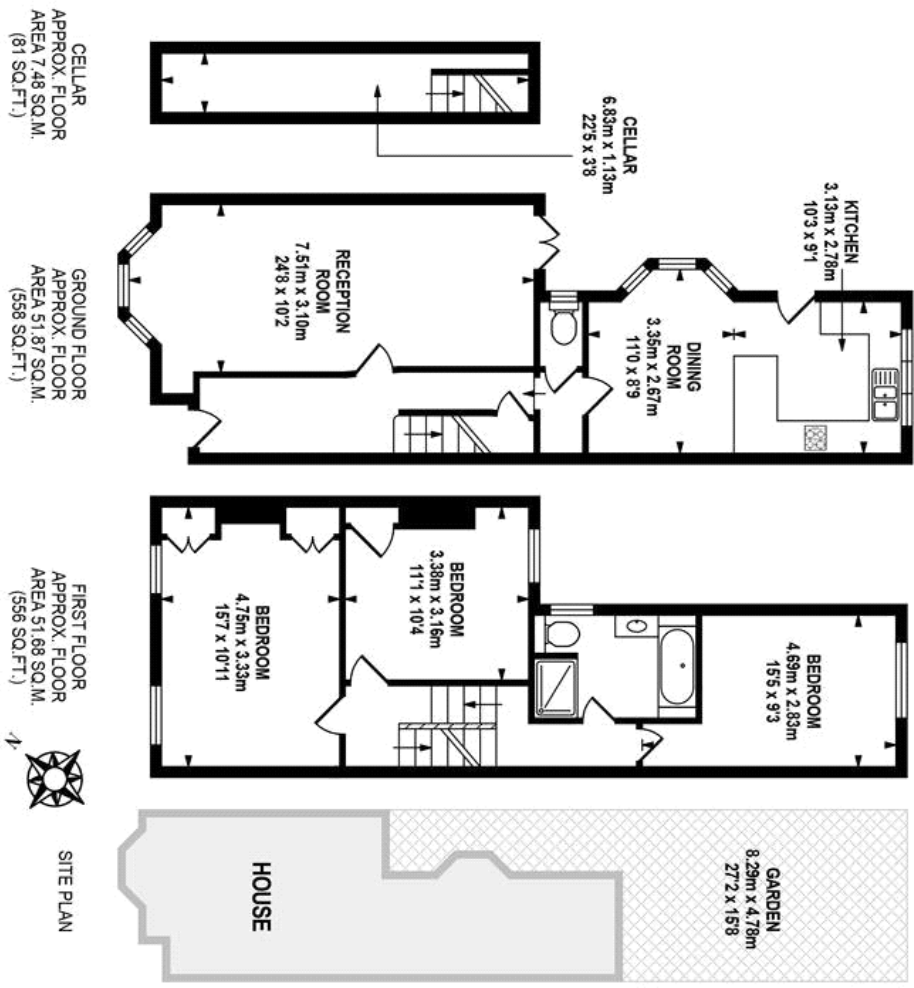
### property features

- Charming 3 double bedroom Victorian mid terraced family home
- Landscaped private rear garden
- Quiet residential street in the heart of East Dulwich
- Double reception room
- Kitchen dining room
- Downstairs guest toilet
- Convenient location

ALPS Estates Ltd trading as Pickwick Estates  
 47 Honor Oak Park Honor Oak  
 London, SE23 1EA, United Kingdom  
 Reg No : 7444750  
 Registered in England

Telephone : 020 3397 1166  
 Website : <https://www.pickwickestates.co.uk>





 pickwick estates

TOTAL APPROX. FLOOR AREA 111.03 SQ.M. (1196 SQ.FT.)

Whilst every effort is made to accurately reproduce these floor plans, measurements are approximate, not to scale and for illustrative purposes only.  
© Datasoft Energy Assessors Ltd. www.datasoft.co.uk

For Full EPC information, click [here](#)