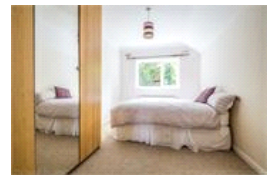
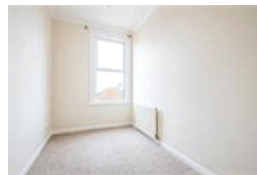
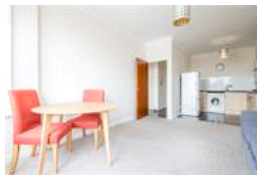
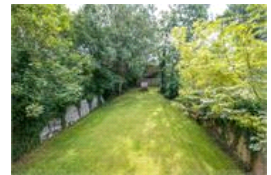


Netherby Road , SE23 (2 bedroom Flat)

£375,000



## property description

A lovely 2-bedroom flat set on the first floor of this handsome double fronted Victorian conversion. The property benefits from being newly repainted, is being sold CHAIN FREE and has a SHARE OF THE FREEHOLD, access to communal gardens to the rear and is located on this popular residential street. Netherby Road is one of SE23's premier locations, twixt Forest Hill, Honor Oak Park and East Dulwich allowing this flat to benefit from all the amenities these areas have to offer! The building has great kerb appeal with its red brick Victorian façade and sash windows on this grand double fronted house. The property is set back from the street with steps leading up to a raised ground floor entr...

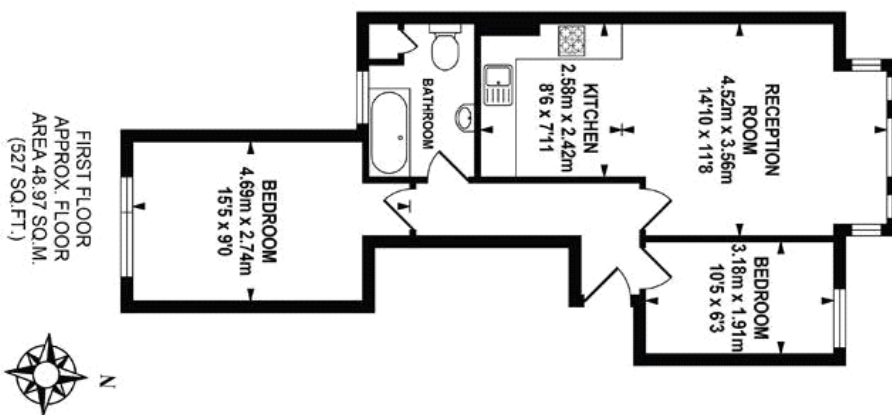
## property features

- Lovely 2 bedroom flat being sold CHAIN FREE
- First floor of a Victorian double fronted conversion
- Communal gardens
- Nice views
- Open plan kitchen reception room
- Spacious lounge with high ceilings
- Bathroom
- SHARE OF FREEHOLD

ALPS Estates Ltd trading as Pickwick Estates  
47 Honor Oak Park Honor Oak  
London, SE23 1EA, United Kingdom  
Reg No : 7444750  
Registered in England

Telephone : 020 3397 1166  
Website : <https://www.pickwickestates.co.uk>





FIRST FLOOR  
APPROX. FLOOR  
AREA 48.97 SQ.M.  
(527 SQ.FT.)

TOTAL APPROX FLOOR AREA 48.97 SQ.M. (527 SQ.FT.)

Whilst every effort is made to accurately reproduce these floor plans, measurements are approximate, not to scale and for illustrative purposes only.

© Dulwich Energy Assessors Ltd. [www.dea-ltd.co.uk](http://www.dea-ltd.co.uk)

For Full EPC Information, click [here](#)