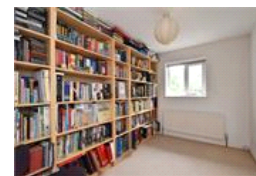
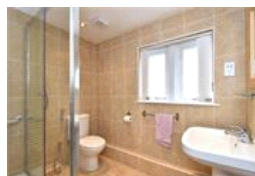
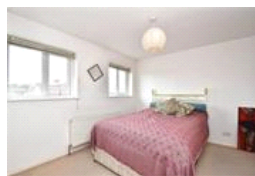
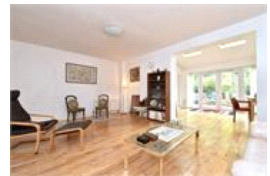
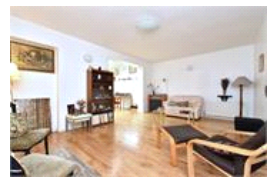
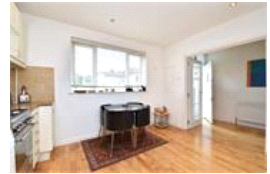


Grierson Road, SE23 (3 bedroom House)

£2,600/month



property description

NOT SUITABLE FOR SHARERS. This fantastic three bedroom, semi-detached house, located a short walk away from Honor Oak Park station. The property comprises of kitchen, reception room and separate toilet and utility area on the ground floor. Upstairs is 3 bedrooms and a family bathroom. Added benefits include off-street parking, a garage and a 100ft west-facing rear garden. The area is much sought after due to its transport links into central and east London and the proximity of several good primary schools including Stillness and Dalmain. Honor Oak Park station provides direct mainline services to London Bridge. In addition, there are Overground services northwards to Shoreditch and Highbu...

property features

- Semi Detached House
- Three Bedrooms
- Two Receptions
- NOT SUITABLE FOR SHARERS
- 100ft West-facing rear garden
- Parking & Garage
- Close To Station
- Available to view from 22nd August 2023

ALPS Estates Ltd trading as Pickwick Estates
47 Honor Oak Park Honor Oak
London, SE23 1EA, United Kingdom
Reg No : 7444750
Registered in England

Telephone : 020 3397 1166
Website : <https://www.pickwickestates.co.uk>





Approximate Gross Internal Area (including Garage)
 1238 sq ft / 1150 sq m (including Garage)
 1102 sq ft / 1024 sq m
 Illustration for identification purposes only;
 measurements are approximate and should not be
 drawn for Plotwide Estates.

Score	Energy rating	Current	Potential
92+	A		
81-91	B		
69-80	C	73 C	84 B
55-68	D		
39-54	E		
21-38	F		
1-20	G		

For Full EPC information, click [here](#)