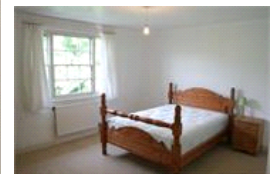
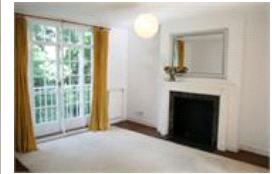


Langford Green, SE5 (4 bedroom House)

£2,700/month



### property description

Charming, secure development sandwiched between Denmark Hill and East Dulwich stations is this fabulous 4 bedroom townhouse with off-street parking. Set on three floors and recently refurbished to a high standard overlooking beautifully landscaped, communal gardens. Briefly comprising 2 reception rooms, balcony, 4 double bedrooms, fitted kitchen and bathroom, downstairs WC . Available December.

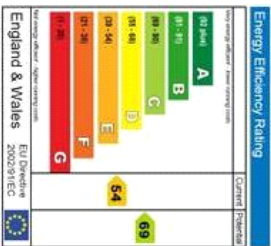
### property features

- Available December
- 4 bedroom town house
- Fully fitted Kitchen and bathroom
- Downstairs WC
- 2 reception rooms
- Off street parking

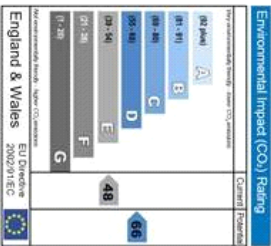
Langford Green, SE5 (4 bedroom House)

£2,700/month





The energy efficiency rating is a measure of the energy performance of a building. Buildings that are more energy efficient have lower energy bills and the bill bills are likely to be



The environmental impact rating is a measure of a building's carbon footprint, expressed in terms of carbon dioxide (CO<sub>2</sub>) emissions. The higher the rating, the less impact it has on the environment.

For Full EPC information, click [here](#)